

# MARKING PINS

For all models

## Pneumatic Controlled dot

Drive air  
Return spring



3 - 6 mm dot



12 mm dot



18 mm dot



3 -6 mm XL dot

## Pneumatic Vibrating dot

Drive air  
Return spring



4 mm vibro



3 mm vibro

## Electric

Solenoid  
driven



3 mm electric

## Scribe pin

Contact marking  
Silent marking



16 mm  
for ASM40150



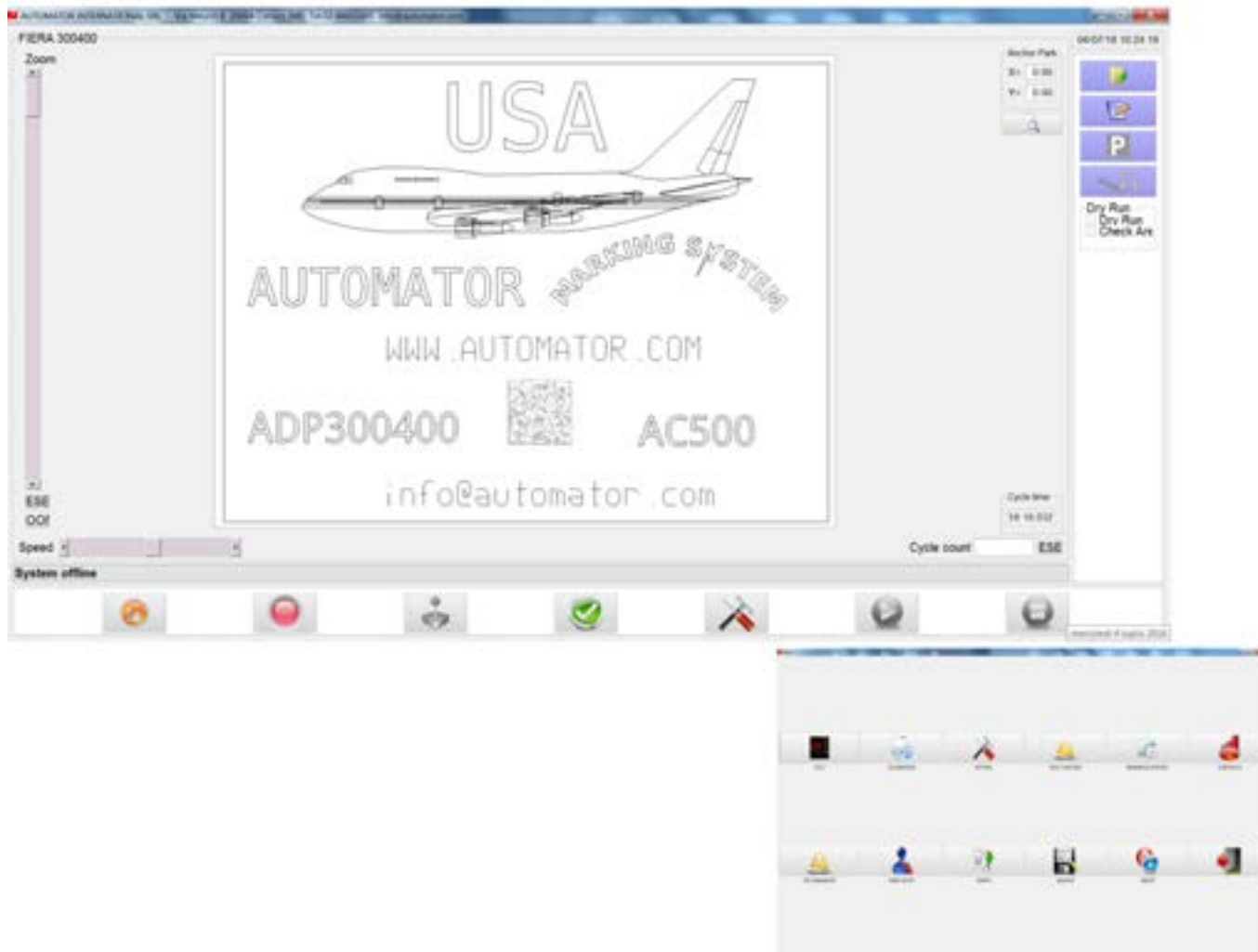
6 mm  
for ASM6090

For all models

# SOFTWARE

## AC500

### PC AC250



**Software** with intuitive and flexible interface, it allows a graphic freedom of absolute value.

Thanks to the touch screen graphic display, it is easy to navigate and to create messages to be marked and set its parameters, displaying also the time of the performance.

The preview allows to represent exactly what will be marked and any change in the message will be displayed instantly. The software provides for the creation of messages with the date in various formats,  $x$  or variable texts, codes, serial numbers, Data matrix and logos. Possible the creation of the programs on the PC, which can be easily transferred to the AC500 controller with USB stick or USB connection.

# OPTIONS

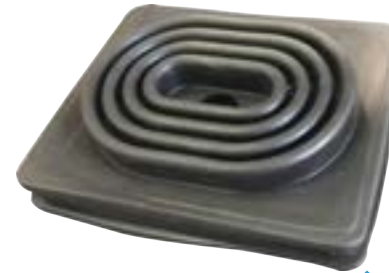
For all models



**X/Y axis**  
Stroke 11,8x11,8"  
stepper motor; maximum  
weight 88 lbs



**Extension**  
For 1,5"  
cartridge



**Rubber protection for ADPs**  
To protect the marker from  
dusts and infiltrations



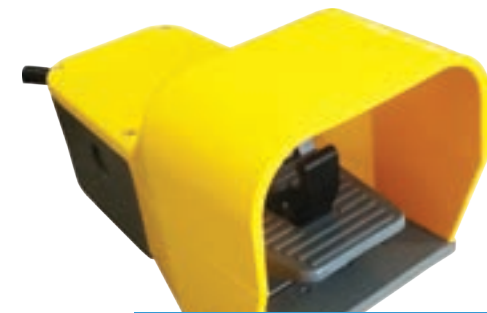
**Portable standoff**  
Handheld for ADP  
markers



**Rotating axis to mark  
on circumferences**  
For diameters up to 3,7", stepper  
motor; maximum weight 16,5 lbs



**Command box**  
With start/stop buttons  
and cable



**Start marking pedal**  
With cable and adapter

For all models

# OPTIONS



### Plate holder

Plate fastening system with double spring anchoring for dot peen markers



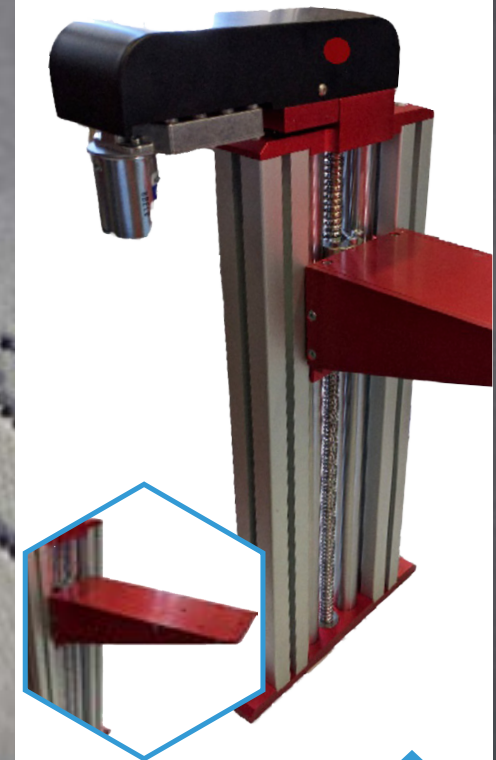
### Radial extension kit

3,3" and 5,2"



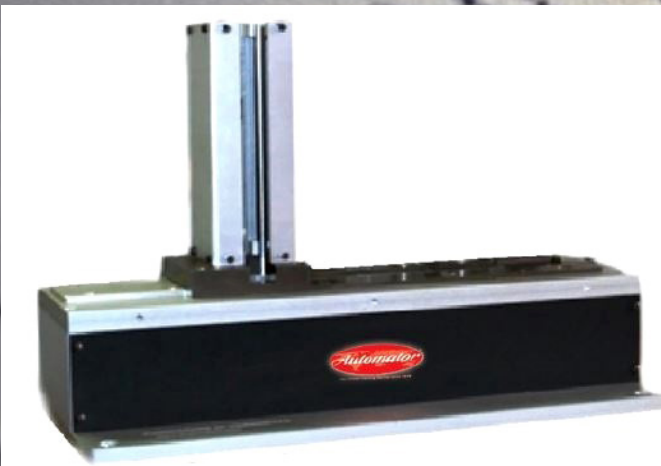
### Portable kit

Two-handed handheld



### Manual or motorized Z axis

Available in height standard or up to 47"



### Tag Feeder

Automatic dual guide tag feeder with electro-pneumatic pushing system that the registration of the height of the marking head.

Watch video now!

