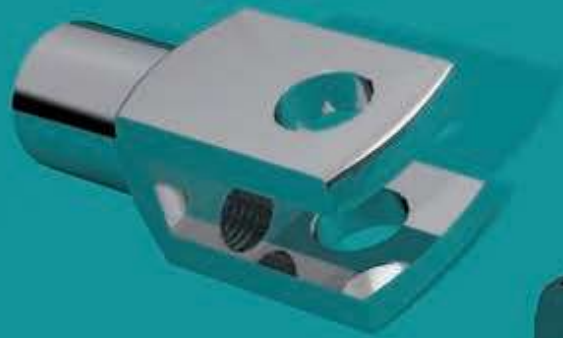


END FITTINGS



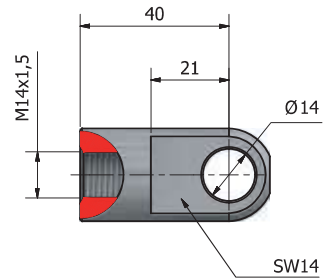
END FITTINGS

Various types for dimension 40-20

E20. Loop M14

Steel
Galvanised

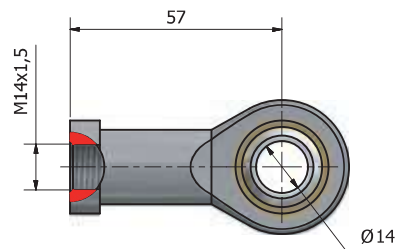
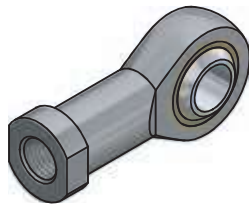
Cat. no: 62100



E21. Loop M14

Steel
Galvanised

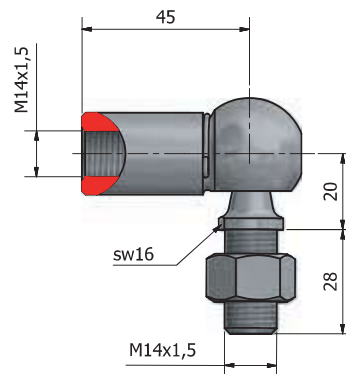
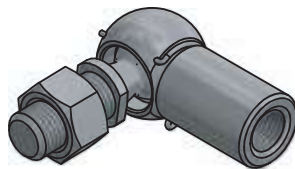
Cat.no: 62101



CS3. Ball joint M14

Steel
Galvanised

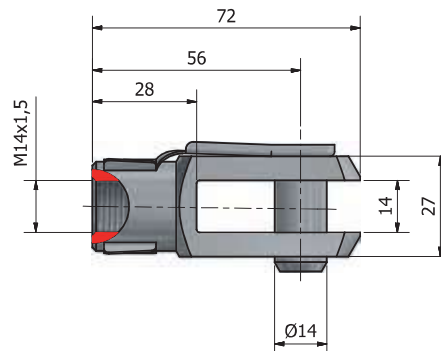
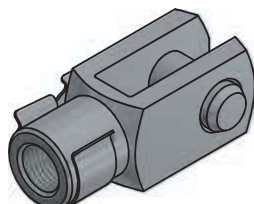
Cat.no: 62102



G13. Clevis Joint M14

Steel
Galvanised

Cat.no: 62103



END FITTINGS

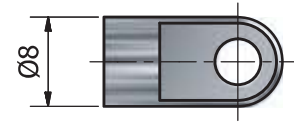
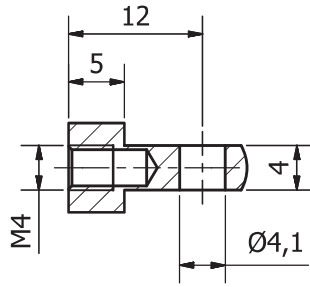
Loops



E1. Loop M4

Steel
Galvanized

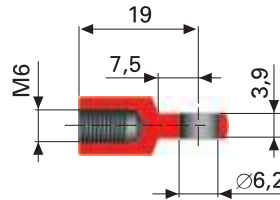
Cat.no: 600



E2. Loop M6

Steel
Black chrome

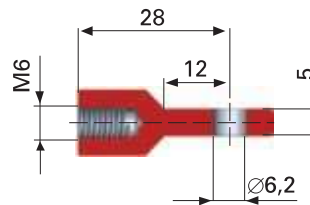
Cat.no: 4612



E3. Loop M6

Zinc

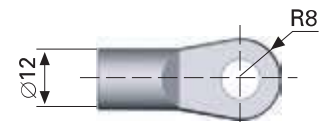
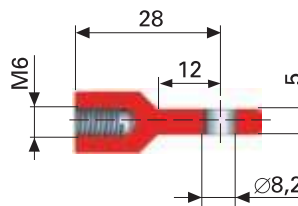
Cat.no: 4592



E4. Loop M6

Zinc

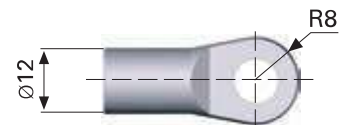
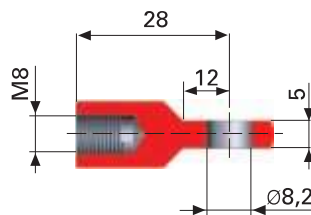
Cat.no: 4593



E5. Loop M8

Zinc

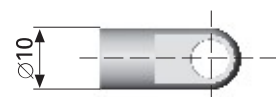
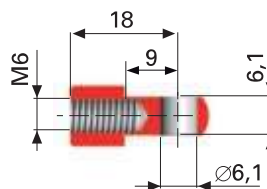
Cat.no: 4601



E6. Loop M6

Aluminium

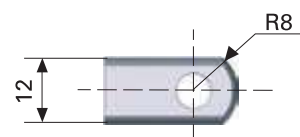
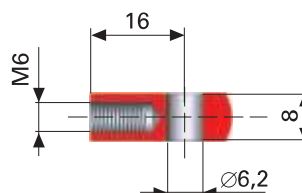
Cat.no: 4225



E7. Loop M6

Aluminium

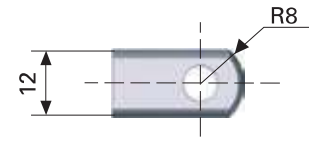
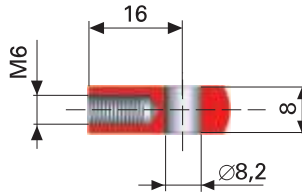
Cat.no: 4595



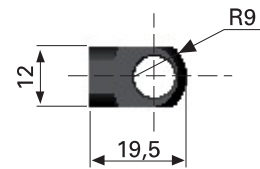
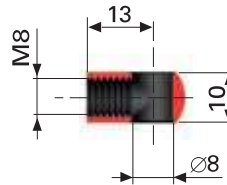
END FITTINGS

Loops

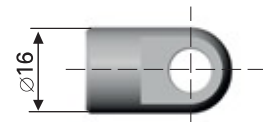
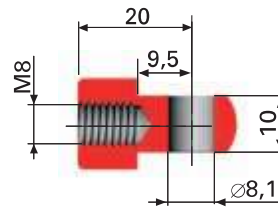
E8. Loop M6
Aluminium
Cat.no: 4596



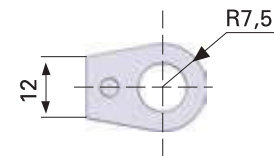
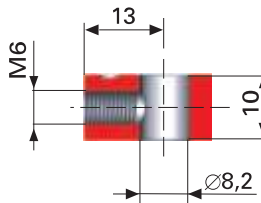
E9. Loop M8
Steel
Black chrome
Screw tap max 8.5 mm
Cat.no: 6600



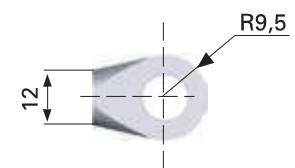
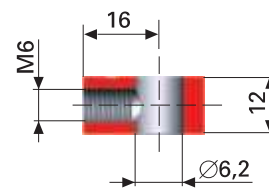
E10. Loop M8
Aluminium
Cat.no: 4012



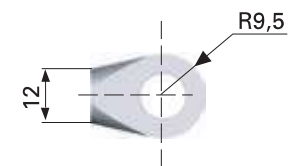
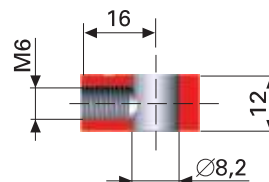
E11. Loop M6
Zinc
Cat.no: 6599



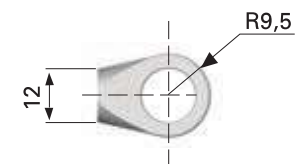
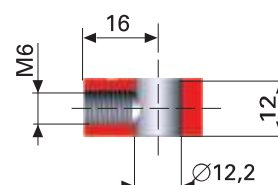
E12. Loop M6
Zinc
Cat.no: 8243



E13. Loop M6
Zinc
Cat.no: 8244



E14. Loop M6
Zinc
Cat.no: 4614

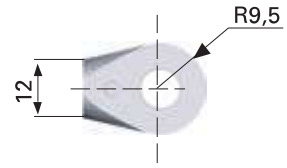
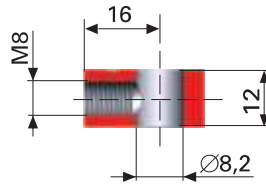


END FITTINGS

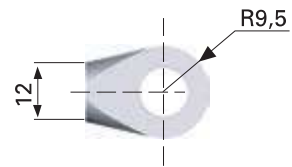
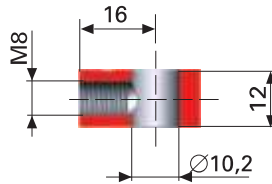
Loops



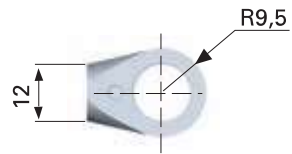
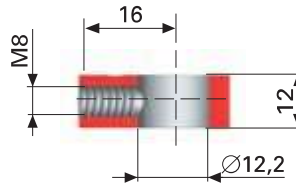
E15. Loop M8
Zinc
Cat.no: 4603



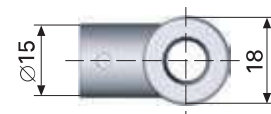
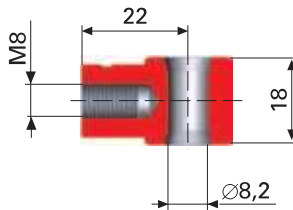
E16. Loop M8
Zinc
Cat.no: 8245



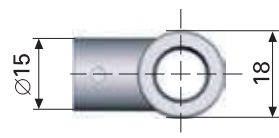
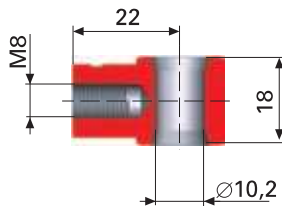
E17. Loop M8
Zinc
Cat.no: 4606



E18. Loop M8
Zinc
Cat.no: 6649



E19. Loop M8
Zinc
Cat.no: 6650



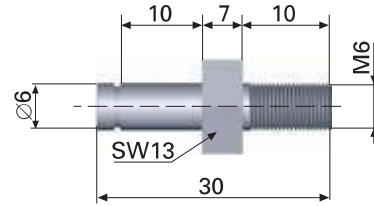
END FITTINGS

Anchors and brackets

AS1. Anchor

Steel
Galvanised
Locking clip included

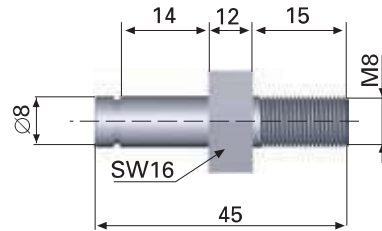
Cat.no: 6412



AS2. Anchor

Steel
Galvanised
Locking clip included

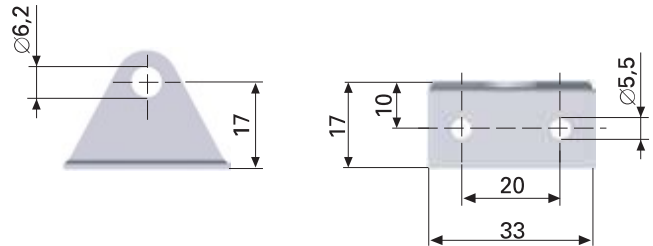
Cat.no: 6411



BK3. Bracket

For light applications
Steel
Galvanised
Bolt and locking clip included

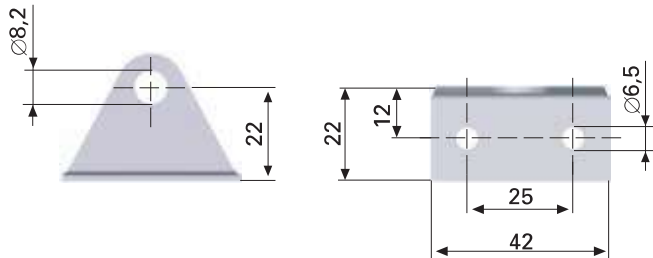
Cat.no: 6410



BK4. Bracket

For light applications
Steel
Galvanised

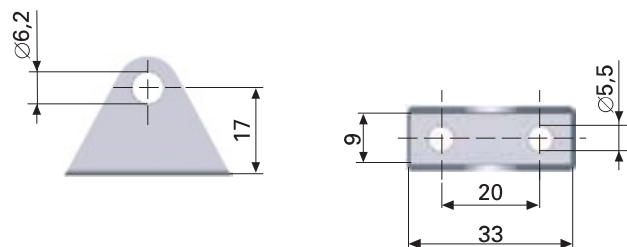
Cat.no: 6409



BK1. Bracket

For light applications
Steel
Galvanised
Bolt and locking clip included

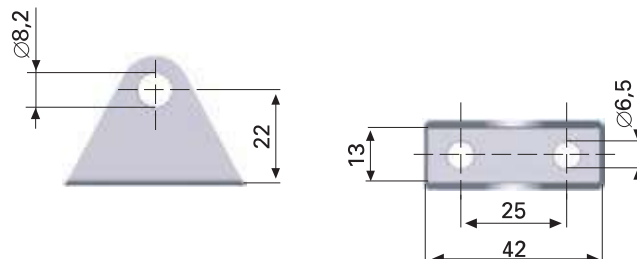
Cat.no: 6408



BK2. Bracket

For light applications
Steel
Galvanised
Bolt and locking clip included

Cat.no: 6407



END FITTINGS

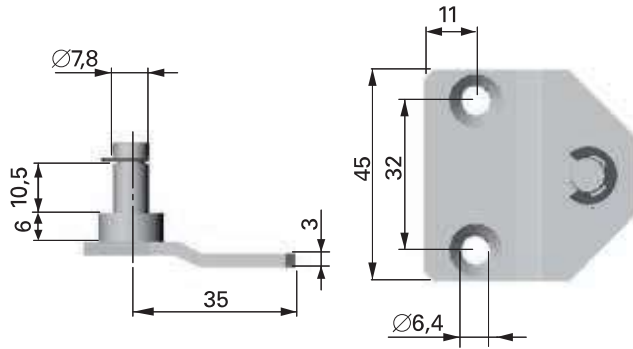
Brackets, extensions, clevises and locking clips



BK5. Bracket

Steel
Galvanised
Locking clip included

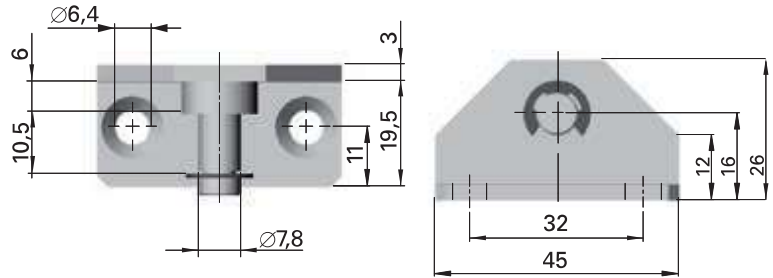
Cat.no: 4623



BK6. Bracket

Steel
Galvanised
Locking clip included

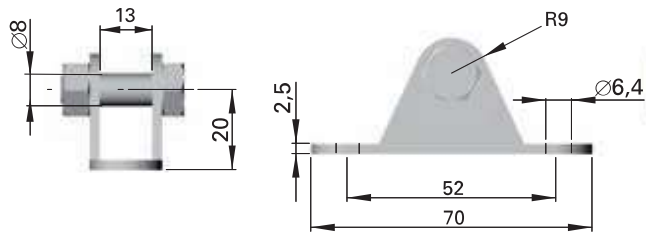
Cat.no: 4624



BK7. Bracket

Steel
Galvanised
Bolt and nut included

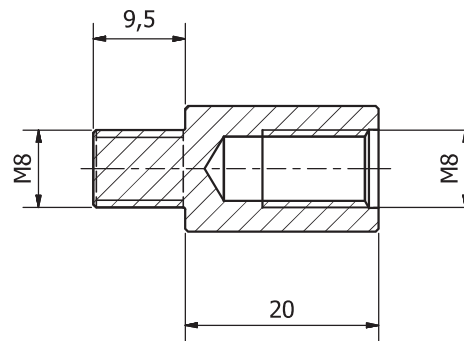
Cat.no: 4628



EX1. Extension

Steel 11SMnPb30+C
Electroplated ZnNi,
black

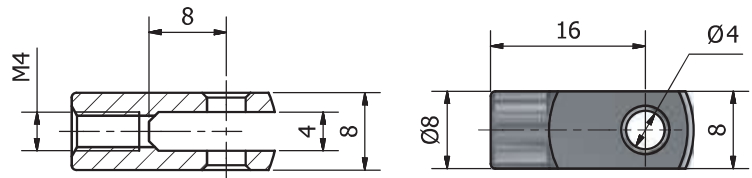
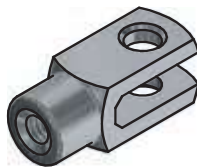
Cat.no: 5660



G1. Clevis M4

Steel
Galvanized

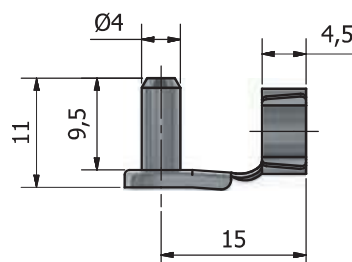
Cat.no: 601



G2. Locking clip

Steel
Galvanized

Cat.no: 602



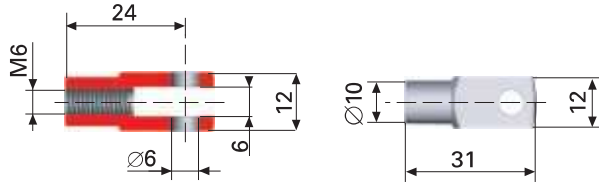
END FITTINGS

Clevises and locking clips

G3. Clevis M6

Steel
Galvanised

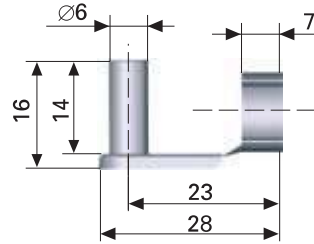
Cat.no: 4620



G4. Locking clip

Steel
Galvanised
Fits G3

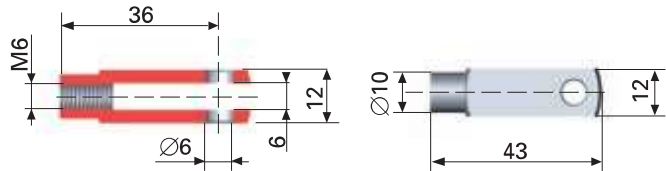
Cat.no: 4621



G5. Clevis M6

Steel
Galvanised

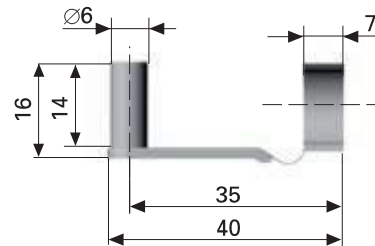
Cat.no: 4996



G6. Locking clip

Steel
Galvanised
Fits G5

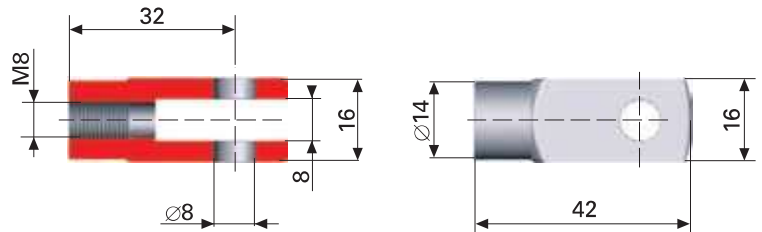
Cat.no: 5089



G7. Clevis M8

Steel
Galvanised

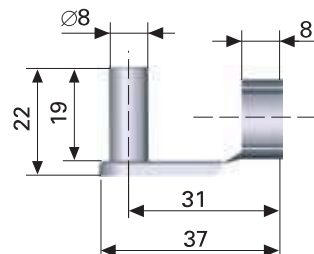
Cat.no:4605



G8. Locking clip

Steel
Galvanised
Fits G7

Cat.no: 4619



END FITTINGS

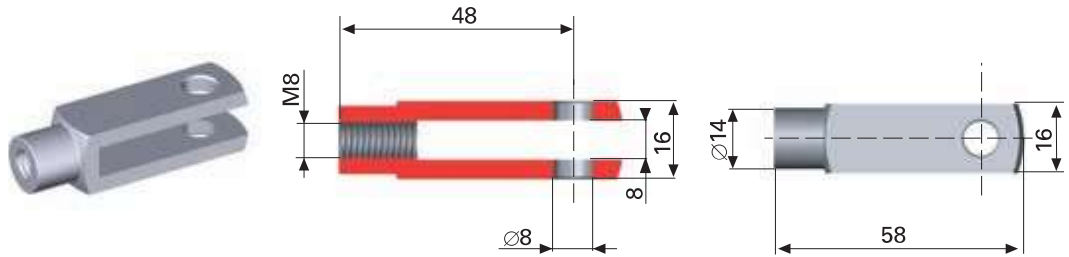
Clevises, locking clips and ball cups



G9. Clevis M8

Steel
Galvanised

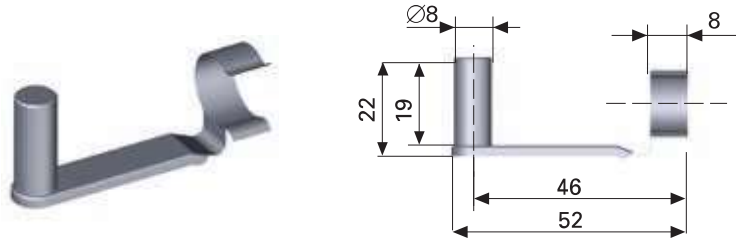
Cat.no: 4214



G10. Locking clip

Steel
Galvanised
Fits G9

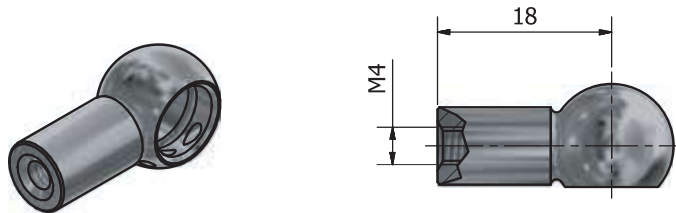
Cat.no: 4215



BC1. Ball cup M4, Ø 8

Steel
Galvanized
Lockwire included

Cat.no: 603



BC2. Ballcup M6, Ø 10

Plastic, black
Locking clip in black galvanised steel

Cat.no: 4597



BC3. Ballcup M6, Ø 10

Plastic, grey
Locking clip chromated steel

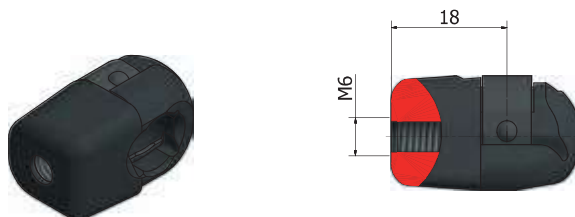
Cat.no: 1114



BC10. Ball cup M6, Ø 10

Plastic, black
Locking clip in black galvanised steel

Cat.no: 5661



BC4. 3. Ballcup M6, Ø 10

Steel
Black chrome

Cat.no: 4594



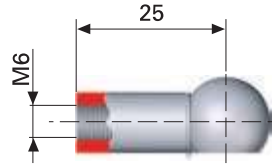
END FITTINGS

Ball cups and ball stud

BC5. Ballcup M6, Ø 10

Steel
Galvanised
Lockwire included

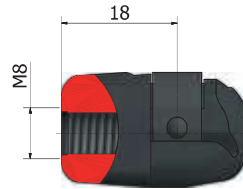
Cat.no: 4615



BC11. Ballcup M8, Ø 10

Plastic, black
Locking clip in black galvanized steel

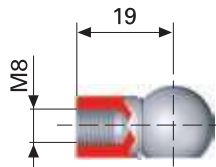
Cat.no: 5662



BC6. Ballcup M8, Ø 10

Steel
Galvanised
Lockwire included

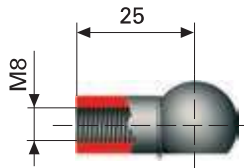
Cat.no: 4602



BC7. Ballcup M8, Ø 13

Steel
Black chrome
Lockwire included

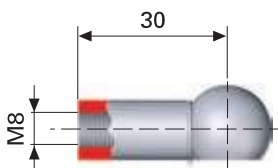
Cat.no: 6651



BC8. Ballcup M8, Ø 13

Steel
Galvanised
Lockwire included

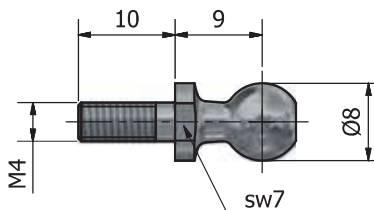
Cat.no: 4599



BS1. Ball stud M4, Ø 8

Steel
Galvanized

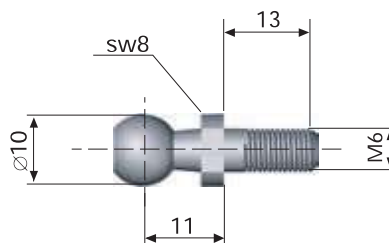
Cat.no: 604



BS2. Ball stud M6, Ø 10

Steel
Galvanized

Cat.no: 4616



END FITTINGS

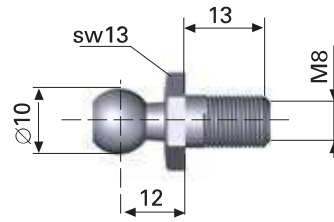
Ball stud and axial links



BS3. Ball stud M8, Ø 10

Steel
Galvanised

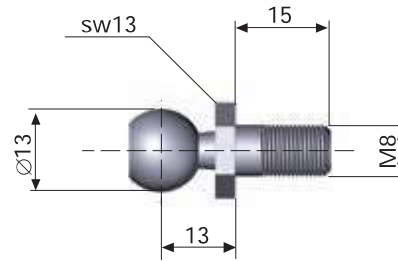
Cat.no: 4610



BS4. Ball stud M8, Ø 13

Steel
Galvanised

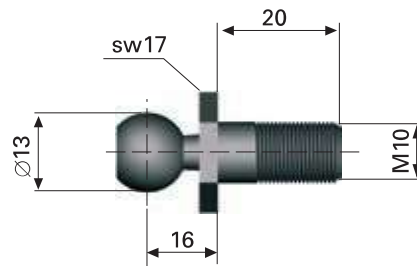
Cat.no: 4611



BS5. Ball stud M10, Ø 13

Steel
Black chrome

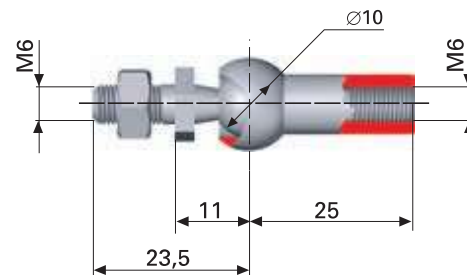
Cat.no: 8272



AX1. Ball link, axial M6

Steel
Galvanised
Including nut
Pull out force 40N

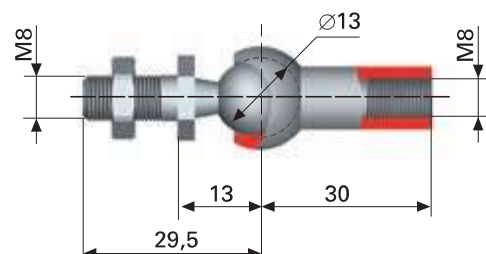
Cat.no: 8960



AX2. Ball link, axial M8

Steel
Galvanised
Including nut
Pull out force 60N

Cat.no: 8961



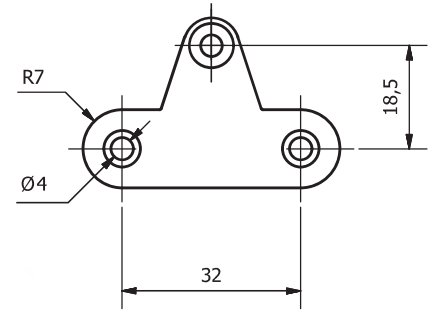
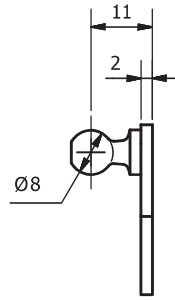
END FITTINGS

Brackets

BK15. Ball bracket Ø 8

Steel
Galvanized

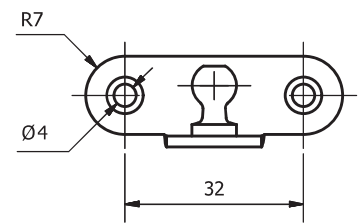
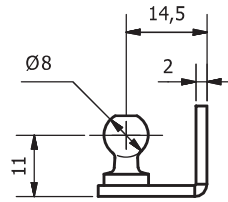
Cat.no: 605



BK16. Ball bracket Ø 8

Steel
Galvanized

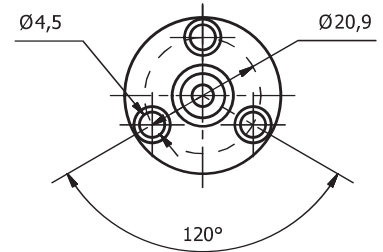
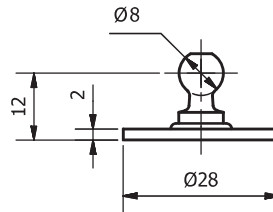
Cat.no: 606



BK17. Ball bracket Ø 8

Steel
Galvanized

Cat.no: 607



END FITTINGS

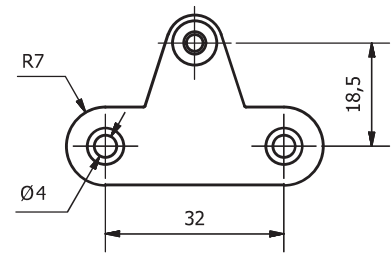
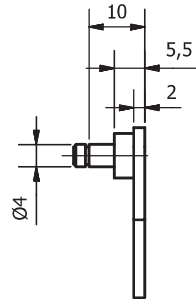
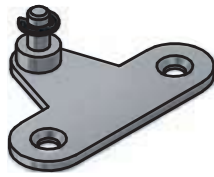
Brackets



BK18. Bracket

Steel
Galvanized
Locking clip included

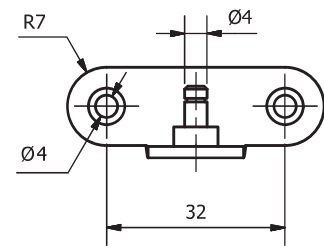
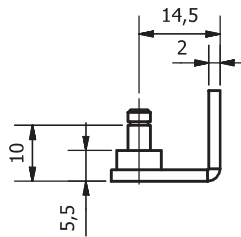
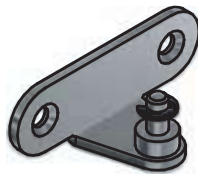
Cat.no: 608



BK19. Bracket

Steel
Galvanized
Locking clip included

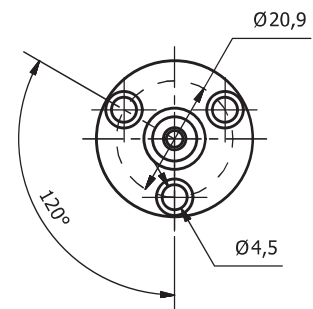
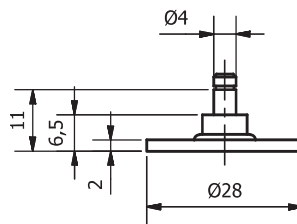
Cat.no: 609



BK20. Bracket

Steel
Galvanized
Locking clip included

Cat.no: 610



END FITTINGS

Socket ball on plate

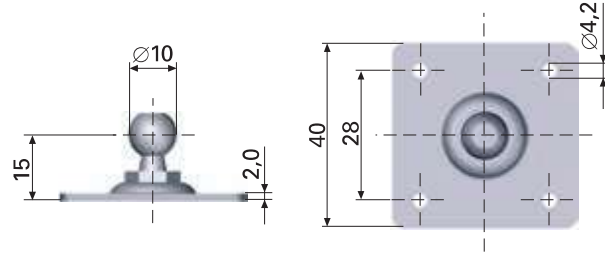
BK8. Socket ball on plate Ø 10

For light applications

Steel

Galvanised

Cat.no: 8273



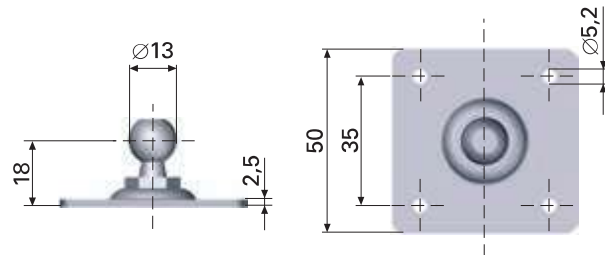
BK9. Socket ball on plate Ø 13

For light applications

Steel

Galvanised

Cat.no: 8274



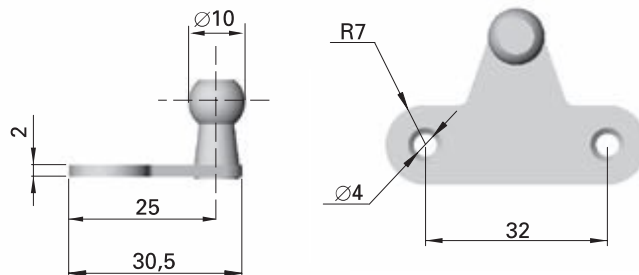
BK10. Socket ball on plate Ø 10

For light applications

Steel

Galvanised

Cat.no: 4625



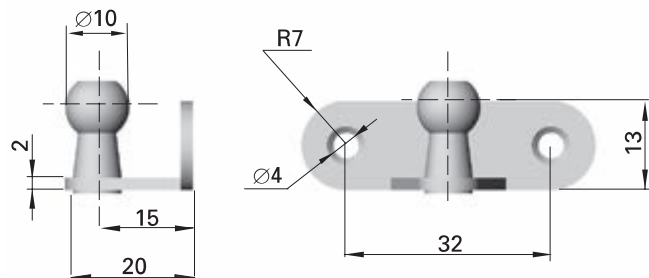
BK11. Socket ball on plate Ø 10

For light applications

Steel

Galvanised

Cat.no: 4626



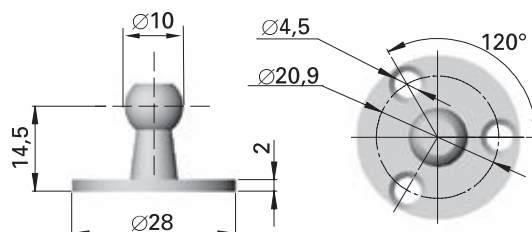
BK12. Socket ball on plate Ø 10

For light applications

Steel

Galvanised

Cat.no: 4627

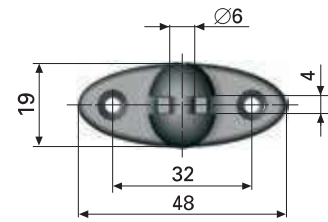
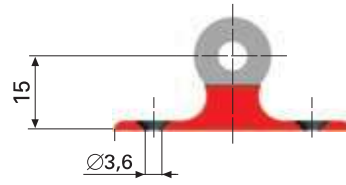


END FITTINGS

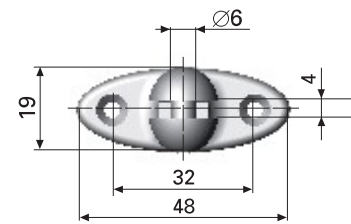
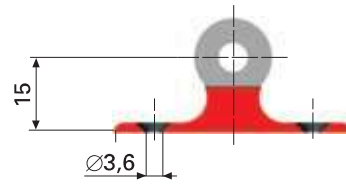
Brackets and fittings



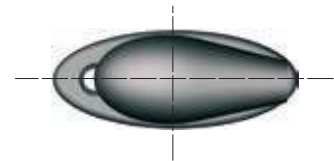
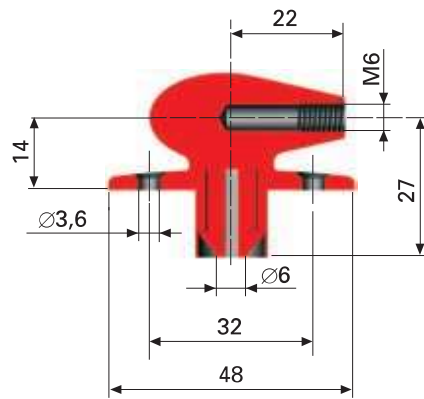
FB1. Bracket
Plastic, black
Cat.no: 8962



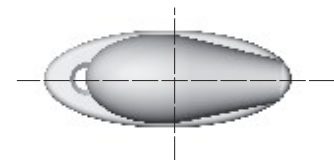
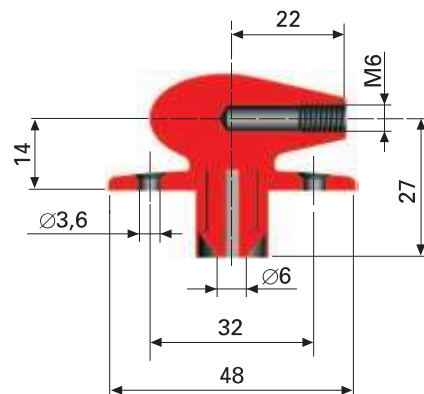
FB2. Bracket
Plastic, grey
Cat.no: 1115



FB3. End fitting
Plastic, black
Cat.no: 8963



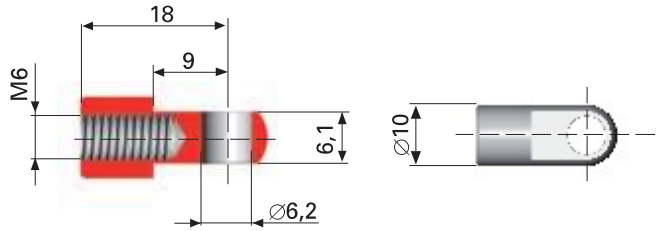
FB4. End fitting
Plastic, grey
Cat.no: 1116



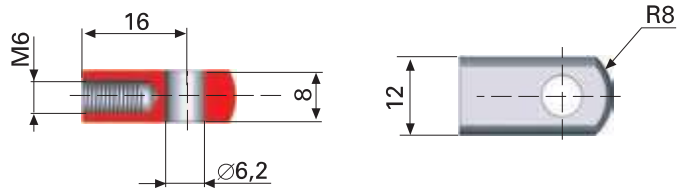
END FITTINGS

Loops – Stainless

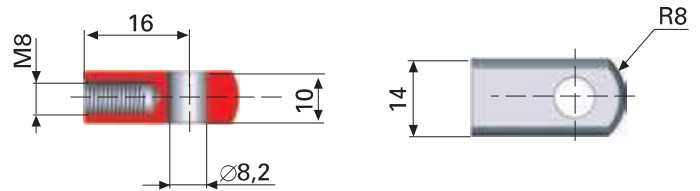
E20. Loop M6
AISI 303 (E No. 1.4305)
Cat.no: S1137



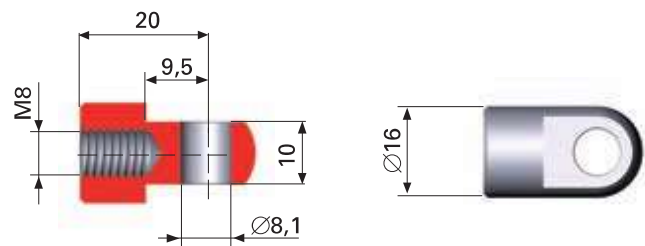
E21. Loop M6
W 1.4305 (E No. 1.4305)
Cat.no: S1129



E22. Loop M8
W 1.4305 (E No. 1.4305)
Cat.no: S1133



E23. Loop M8
AISI 303 (E No. 1.4305)
Cat.no: S1138



END FITTINGS

Brackets and fork sockets - Stainless

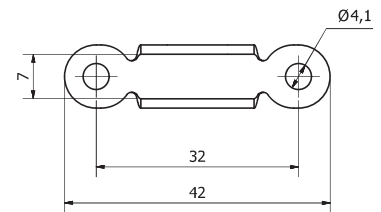
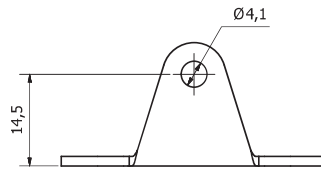
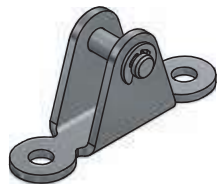


BK21. Bracket

EN 1.4301

Bolt and locking clip included

Cat.no: S1140

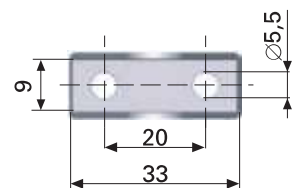
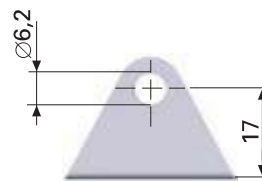


BK13. Bracket

SS2333-02 (E No. 1.4301)

Bolt and locking clip included

Cat.no: S1132

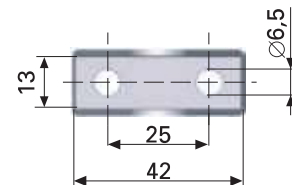
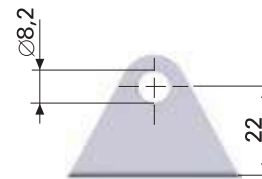


BK14. Bracket

SS2333-02 (E No. 1.4301)

Bolt and locking clip included

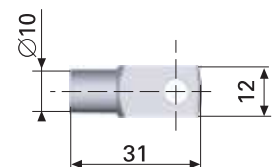
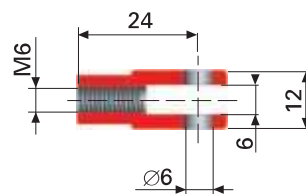
Cat.no: S1136



G11. Fork socket M6

W 1.4305 (E No. 1.4305)

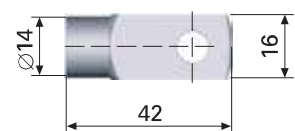
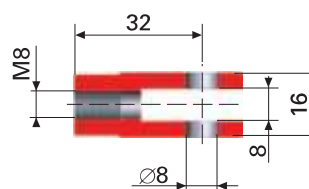
Cat.no: S1130



G12. Fork socket M8

W 1.4305 (E No. 1.4305)

Cat.no: S1134



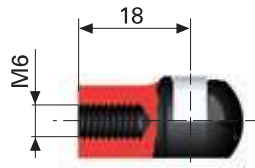
END FITTINGS

Ball cup, ball joint and ball stud - Stainless

BC9. Ballcup M6, Ø 10

Plastic, black
Locking clip STS301
(E No. 1.4310)

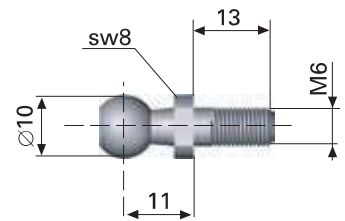
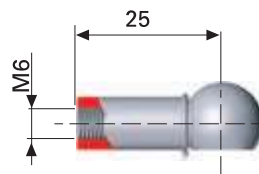
Cat.no: 4629



CS1. Ball joint M6

W 1.4305 (E No. 1.4305)

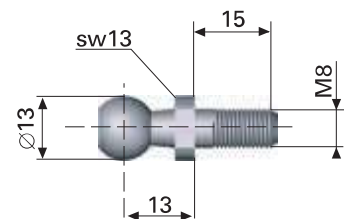
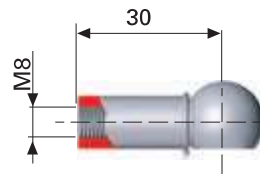
Cat.no: S1131



CS2. Ball joint M8

W 1.4305 (E No. 1.4305)

Cat.no: S1135



BS6. Ball stud M8, Ø 10

W 1.4305 (E No. 1.4305)

Cat.no: S1139

