

CLICK OR SCAN

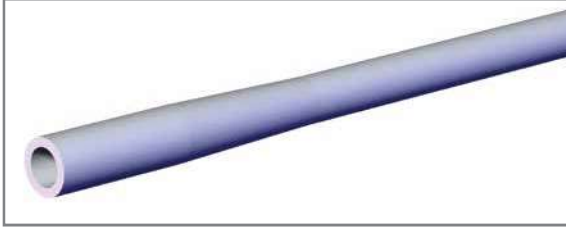
QR codes for full catalog pages on products

ROUND TOOLING SYSTEMS

PAT and WTTB Series Booms and Tubing | CB Series Aluminum Bushing



For Booms and Bushings



PAT Ø3.00" Tapered Aluminum Main Booms

Model	"L"
CPI-PAT-30TP-0M-1600	[62.99] 1600.0
CPI-PAT-30TP-0M-30	[30.00] 762.0
CPI-PAT-30TP-0M-34	[34.00] 863.6
CPI-PAT-30TP-0M-36	[36.00] 914.4
CPI-PAT-30TP-0M-60	[60.00] 1524.0
CPI-PAT-30TP-1M-55	[55.00] 1397.0
CPI-PAT-30TP-1M-60	[60.00] 1524.0
CPI-PAT-30TP-1M-64	[64.00] 1625.6
CPI-PAT-30TP-2M-55	[55.00] 1397.0

WTTB World Tool Bayonet Boom



Part Number	ØD	Length
CPI-WTTB-RDC-A6-EL10-60-2000	60mm	2000mm
CPI-WTTB-RDC-A6-EL10-25-64	2.5 in	64 in

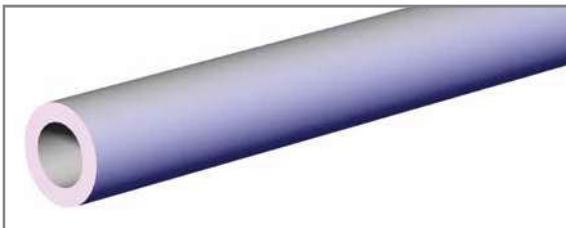
CB Aluminum Bushing



Model	(Ø)"O.D."	(Ø)"I.D."
CPI-CB-15-10	1.50"	1.00"
CPI-CB-20-15	2.00"	1.50"
CPI-CB-25-20	2.50"	2.00"



For Tubing and Rods



PAT Aluminum Tubing

Model	(Ø)"O.D."
CPI-PAT-1025-"L"	1.00"
CPI-PAT-12-"L"	1.25"
CPI-PAT-15-"L"	1.50"
CPI-PAT-40-"L" (Metric)	40mm
CPI-PAT-25-"L"	2.50"
CPI-PAT-60-"L" (Metric)	60mm
CPI-PAT-2538-"L"	2.50"

"L" = Specify Length

in 6.00" or 150mm Increments

English Example: CPI-PAT-15-06 (6.00")

Metric Example: CPI-PAT-40-150 (150mm)

ROUND TOOLING SYSTEMS

CLICK OR SCAN
QR code for
Tubing and Rods



PAT, PAB, and PST Series Tubes and Rods | CB Series Aluminum Bushing

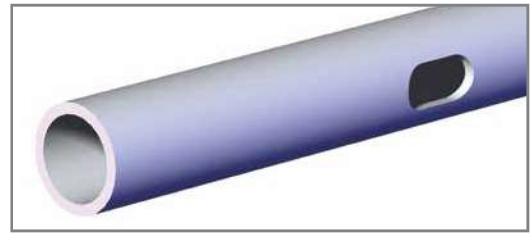
BT1 Slotted Aluminum Boom/Tubing

Model	(Ø) "O.D."
CPI-BT1-150-7S-"L"	1.50"
CPI-BT1-250-9S-"L"	2.50"
CPI-BT1-2538-9S-"L"	2.50"
CPI-BT1-60-9S-"L" (Metric)	60mm

"L" = Specify Length in 6.00" or 150mm Increments

English Example: CPI-BT1-150-7S-06 (6.00")

Metric Example: CPI-BT1-150-7S-150 (150mm)



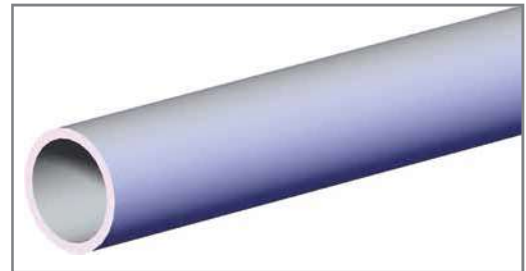
PAT Thin Wall Aluminum Tubing

Model	(Ø) "O.D."
CPI-PAT-50T-"L"	0.50"
CPI-PAT-75T-"L"	0.75"
CPI-PAT-10T-"L"	1.00"

"L" = Specify Length

Standard Lengths

04 (4.00") 08 (8.00") 12 (12.00") 36 (36.00")
06 (6.00") 10 (10.00") 24 (24.00")



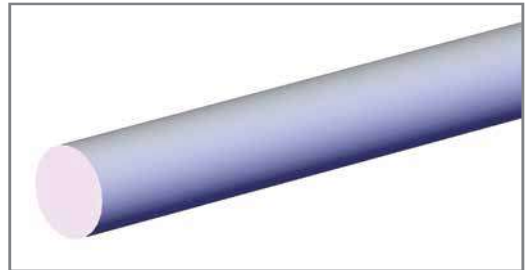
PAB Aluminum Rods

Model	(Ø) "O.D."
CPI-PAB-10-"L"	1.00"
CPI-PAB-25-"L" (Metric)	25.0mm

"L" = Specify Length in 6.00" or 150mm Increments

English Example: CPI-PAB-10-06 (6.00")

Metric Example: CPI-PAB-25-150 (150mm)



PST Steel Tubing

Model	(Ø) "O.D."
CPI-PST-10-"L"	1.00"
CPI-PST-1212-"L"	1.25"
M1512-"L"	1.00"

(L) = Specify Length

PST-10: 150, 200, 225, 250, 275, 300 [mm] (CPI-PST-10-150)

PST-1212: 6, 8, 10, 12, 14, 16, 18 [in] (CPI-PST-1212-6)

M1512: 125, 160, 300, 350, 350, 600, 900 [mm] (M1512-150)



Tolerance Specifications

(Ø) "D" vs. Actual (Ø) Bore Sizes (Micro)				(Ø) "D" vs. Actual (Ø) Bore Sizes (Typical)					
(Ø) "D"	Tolerance	(Ø) "D"	Tolerance	(Ø) "D"	Tolerance	(Ø) "D"	Tolerance	(Ø) "D"	Tolerance
.50"	±.002	12mm	±.13	1.00"	±.002	25mm	±.13	1.25"	±.002
.75"	±.002	20mm	±.13	1.50"	±.006	40mm	±.15	3.00"	±.006
1.00"	±.002	25mm	±.13	2.50"	±.006	60mm	±.15	30mm	±.13