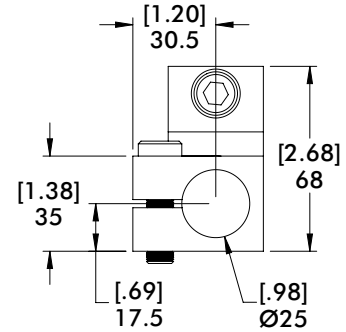
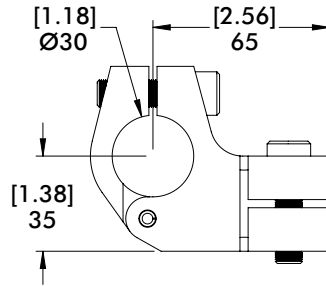
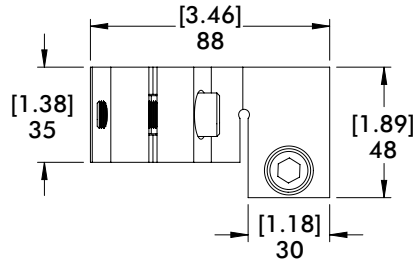


T-CLAMP TRANSITION BRACKETS AND BLOCKS

Round Tooling | Dimensions | Technical Specifications

Nominal (Ø) given
See chart on Page 72
for actual (Ø) size

TCAH Ø30mm to Ø25mm



Specifications:

Max. Static Clamp Load:

Ø30mm:

237 N*m [175 ft-lb]

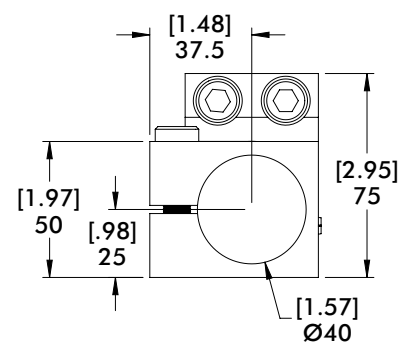
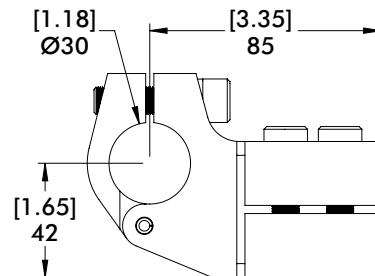
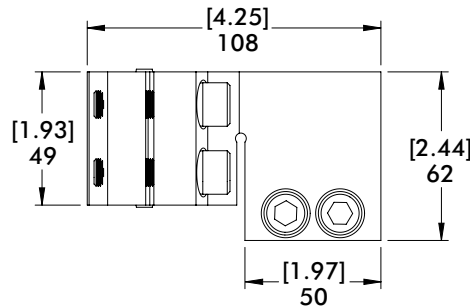
Ø25mm/1.00":

200 N*m [150 ft-lb]

Material: Aluminum

Model Number	Weight
CPI-TCAH30M-25M	[0.72 lb] 325g

TCAH Ø30mm to Ø40mm



Specifications:

Max. Static Clamp Load:

Ø30mm:

237 N*m [175 ft-lb]

Ø40mm:

271 N*m [200 ft-lb]

Material: Aluminum

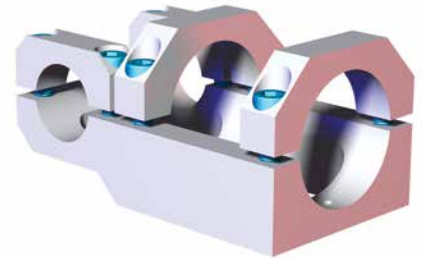
Model Number	Weight
CPI-TCAH30M-40M	[1.40 lb] 634g

T-CLAMP TRANSITION BRACKETS AND BLOCKS

Nominal (Ø) given
See chart on Page 72
for actual (Ø) size

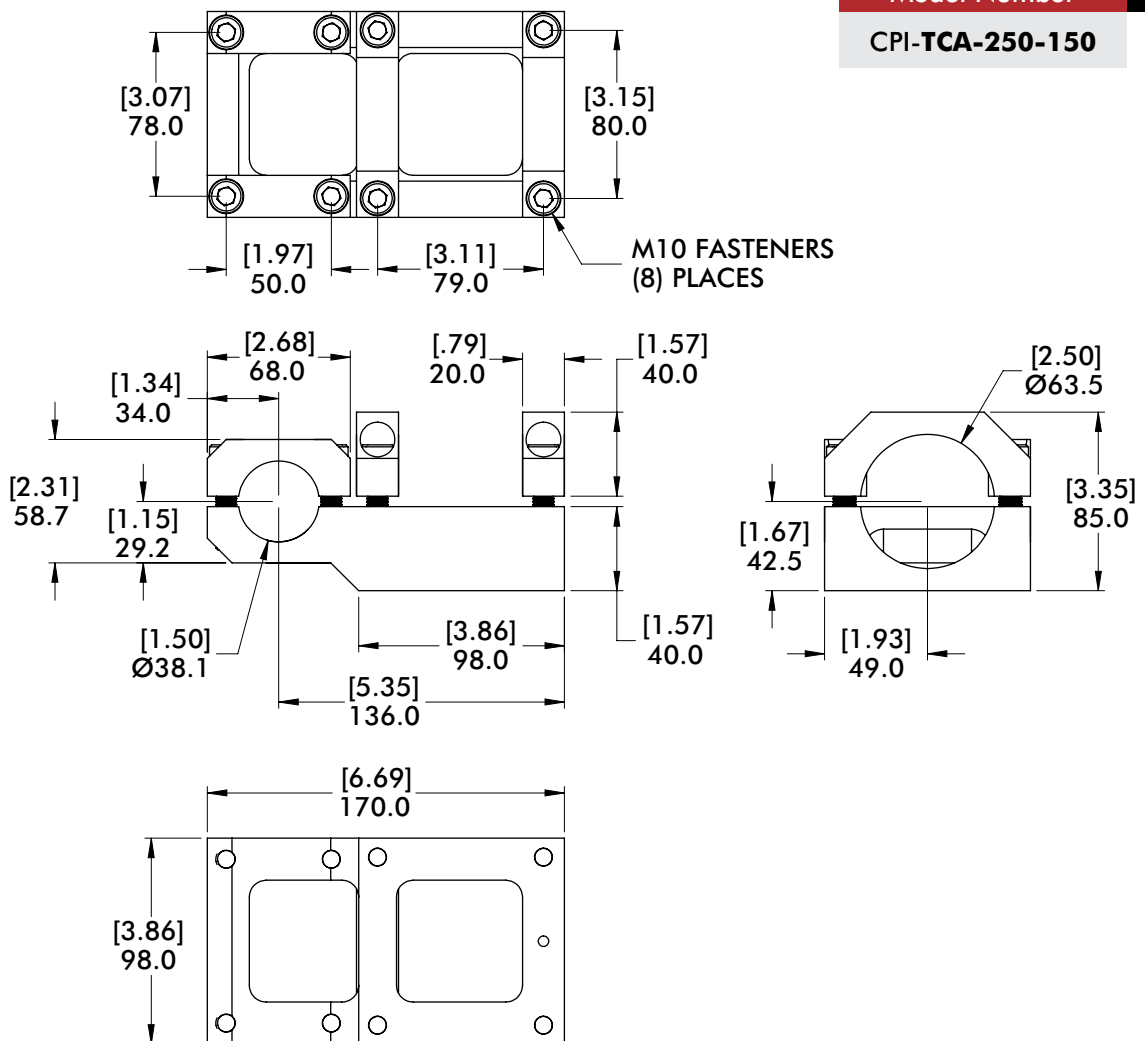
Round Tooling | Dimensions | Technical Specifications

TCA Ø2.50" to Ø1.50" T-Clamp Bracket Assembly



Specifications:
Max. Static Clamp Load:
Ø1.50":
271 N*m [200 ft-lb]
Ø2.50":
677 N*m [500 ft-lb]
Material: Aluminum

Model Number	Weight
CPI-TCA-250-150	[2.76 lb] 1.25 kg

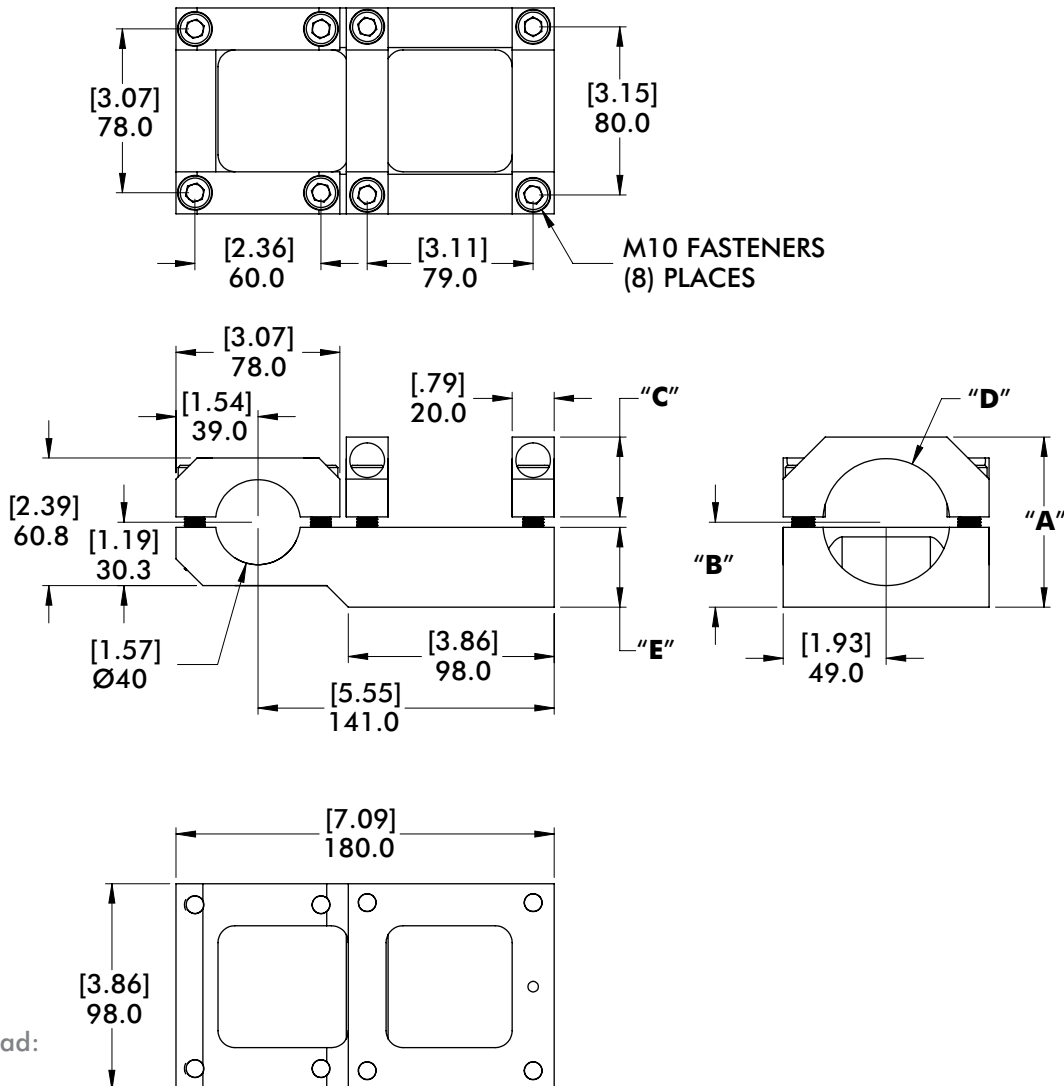
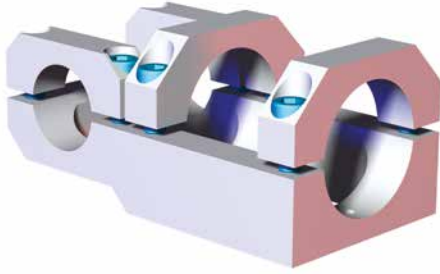


T-CLAMP TRANSITION BRACKETS AND BLOCKS

Round Tooling | Dimensions | Technical Specifications

Nominal (\emptyset) given
See chart on Page 72
for actual (\emptyset) size

TCA $\emptyset 60\text{mm}/2.50''$ to $\emptyset 40\text{mm}$ T-Clamp Bracket Assembly



Specifications:
Max. Static Clamp Load:
 $\emptyset 40\text{mm}$:
271 N*m [200 ft-lb]
 $\emptyset 60\text{mm}/2.50''$:
677 N*m [500 ft-lb]
Material: Aluminum

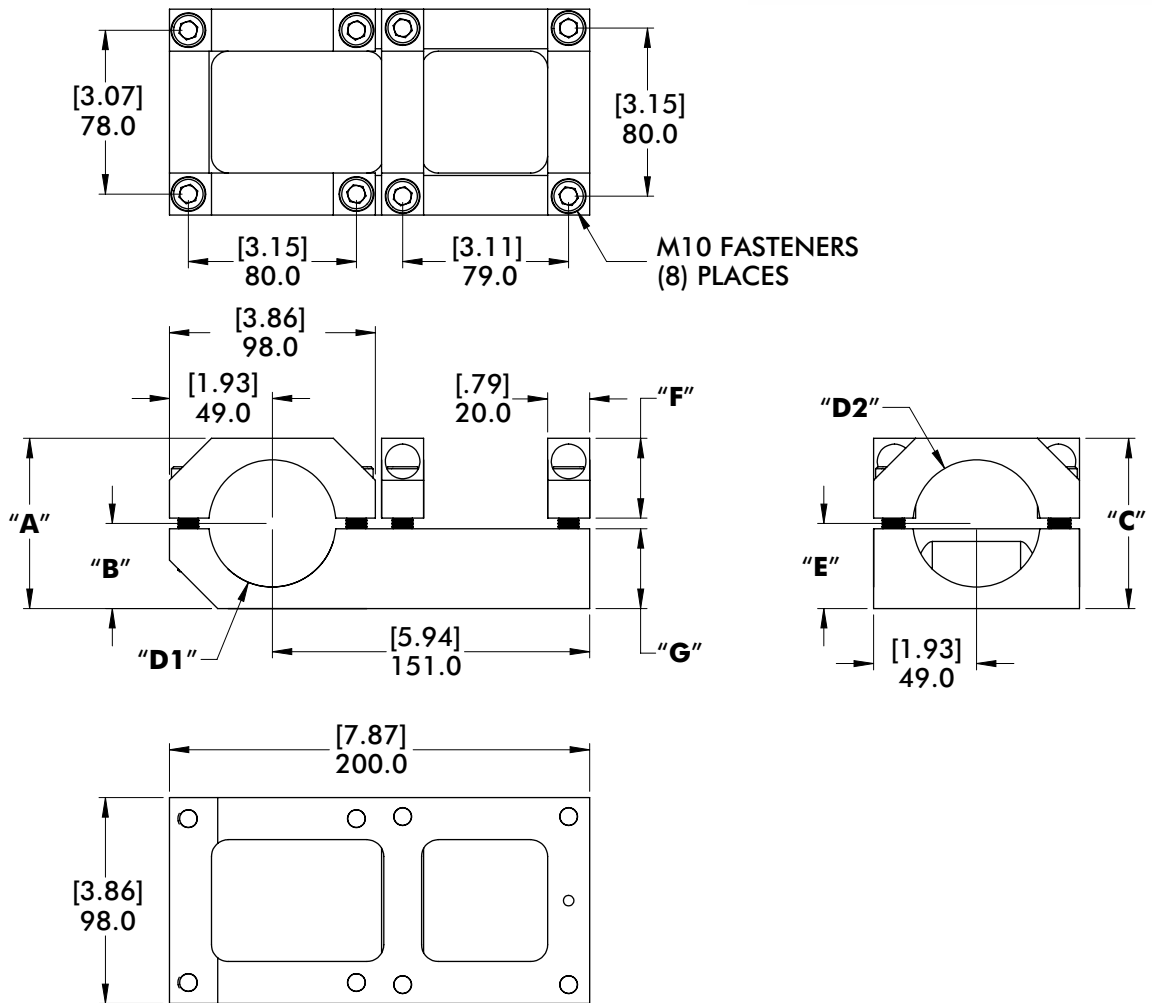
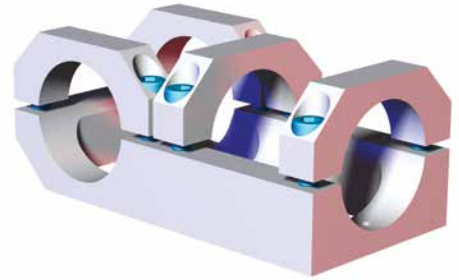
Model Number	(\emptyset) "D"	"A"	"B"	"C"	"E"	Weight
CPI-TCA-60M-40M	60mm	[3.19] 81.0	[1.59] 40.5	[1.50] 38.0	[1.50] 38.0	[2.89 lb] 1.31 kg

T-CLAMP TRANSITION BRACKETS AND BLOCKS

Nominal (Ø) given
See chart on Page 72
for actual (Ø) size

Round Tooling | Dimensions | Technical Specifications

TCA Ø60mm/2.50" to Ø60mm/2.50" T-Clamp Bracket Assembly



Specifications:
Max. Static Clamp Load:
813 N*m [600 ft-lb]
Material: Aluminum

Model Number	(Ø)"D1"	(Ø)"D2"	"A"	"B"	"C"	"E"	"F"	"G"	Weight
CPI-TCA-60M-60M	60mm	60mm	[3.19] 81.0	[1.59] 40.5	[3.19] 81.0	[1.59] 40.5	[1.50] 38.0	[1.50] 38.0	[3.15 lb] 1.43 kg
CPI-TCA-250-250	2.50"(in)	2.50"(in)	[3.35] 85.0	[1.67] 42.5	[3.35] 85.0	[4.67] 42.5	[1.57] 40.0	[1.57] 40.0	