

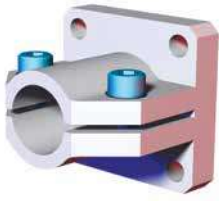
# ROUND TOOLING SYSTEMS

CLICK OR SCAN  
QR code for End  
Flange Mounts



KL, CL and RJM Series End Flange Mounts

## KL/CL End Flange Mount



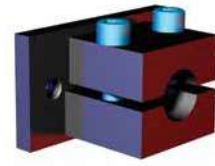
for 20mm/0.75" Tube (Micro)

Model Number	Tube (Ø)
CPI-CLM-20M-15F	20mm
CPI-CLM-75-15F-ATI	.75"



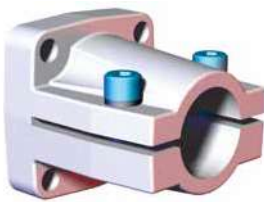
for Ø25mm/1.00" Tube (Micro)

Model Number	Tube (Ø)
CPI-CLM-25M-15F	25mm
CPI-CLM-10-15F	1.00"



for Ø1.00" Tube

Model Number
M1511



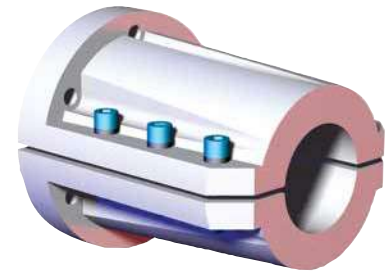
for Ø40mm/1.50" Tube

Model Number	Tube (Ø)
CPI-KL-40-60F	40mm
CPI-CL-15-238F	1.50"



for Ø60mm/2.50" Tube

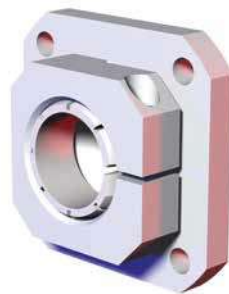
Model Number	Tube (Ø)
CPI-KL-60-78F	60mm
CPI-CL-25-312F	2.50"



with Ø125mm Bolt Pattern

Model Number	Tube (Ø)
CPI-CL-60-125F	60mm
CPI-CL-250-125F	2.50"
CPI-CL-300-125F	3.00"

## RJM Ø40mm Spherical Flange End Mount



Model Number	Tube (Ø)
CPI-RJM-78F-40S	40mm

**CLICK OR SCAN**

QR codes for full catalog pages on products

# ROUND TOOLING SYSTEMS

CLM, KL, CL and M Series Mid Flange Mount



For Mid Flange Mounts



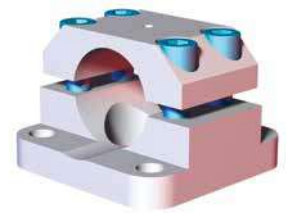
for 20mm/0.75" Tube (Micro)

Model Number	Tube (Ø)
CPI-CLM-20M-1517F-90	20mm
CPI-CLM-75-1517F-90	.75"



for Ø25mm/1.00" Tube (Micro)

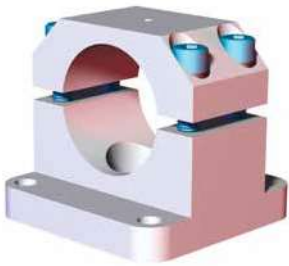
Model Number	Tube (Ø)
CPI-CLM-25M-152F-90	25mm
CPI-CLM-10-152F-90	1.00"



## Mid Flange Mount

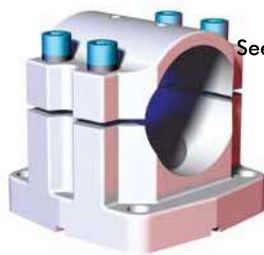
for Ø40mm/1.50" Tube

Model Number	Tube (Ø)
CPI-KL-40-60F-90	40mm
CPI-CL-15-238F-90	1.50"



for Ø60mm Tube

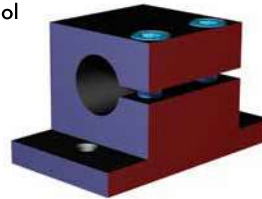
Model Number
CPI-KL-60-78F-90
CPI-KL-60-80F-90



for Ø2.50" Tube

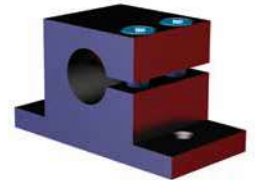
Model Number
CPI-CL-25-312F-90

MISSING  
See World Tool  
Mounts



for Ø1.00" Tube (Inline)

Model Number
M1509



for Ø1.00" Tube

Model Number
M1510

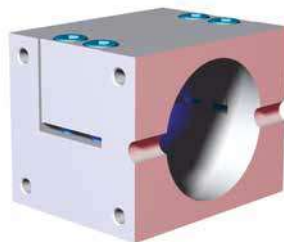


For World Tool Direct Mounts



for 2.50" Tube

Model Number
CPI-CL-25-DM-10F



for Ø60mm/2.50" Tube

Model Number	Tube (Ø)
CPI-CL-60-DM-40F	60mm
CPI-CL-25-DM-15F	2.50"

## World Tool Direct Mounts

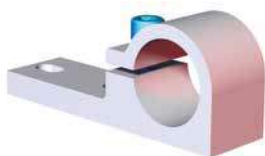


Ø25mm/1.00" Tube/  
Ø40mm/1.50" Tube

Model Number
CPI-CL-25EX-238F-90



For Base Mount Block



Model Number	Tube (Ø)
CPI-BC-00-25	25mm
CPI-BC-00-100	1.00"
CPI-BC-00-40	40mm
CPI-BC-00-150	1.50"

## Offset Flange Mount