

ROUND TOOLING SYSTEMS

CLICK OR SCAN
QR codes for full catalog
pages on products

EST, AB and SAP Series Nest Pad Brackets

EST Series Nest Pad Brackets

For Nest Pad
Brackets



Ø60mm to Ø60mm 45

Apple Core Version

90° Version

90° Apple Core Version

Model Number	Pin Ø	Model Number	Model Number	Pin Ø	Model Number
CPI-EST-00-1E-24	1 in	CPI-EST-00-075-24	CPI-EST-90-1E-24	1 in	CPI-EST-90-075-24
CPI-EST-00-25-410	25mm	CPI-EST-00-19-410	CPI-EST-90-25E-410	25mm	CPI-EST-90-19-410

AB Series Nest Pad Brackets



Ø60mm to Ø60mm 45

Apple Core Version

90° Version

90° Apple Core Version

Model Number	Pin Ø	Model Number	Model Number	Pin Ø	Model Number
CPI-AB-00-1E-24	1 in	CPI-AB-750-24	CPI-AB-90-1E-24	1 in	CPI-AB-90-24
CPI-AB-25-410	25mm	CPI-AB-19-410	CPI-AB-90-25-410	25mm	CPI-AB-90-19-410

SAP Series Proximity Switch Mounts

For Proximity
Switch Mounts



with 1" Extension

with Apple Core

Model Number	Hole (Ø)
CPI-SAP-18-1E	[0.39] 10
CPI-SAP-30-1E	[1.18] 30

Model Number	Hole (Ø)
CPI-SAP-00	NA
CPI-SAP-10	[0.39] 10
CPI-SAP-18	[0.71] 18
CPI-SAP-30	[1.18] 30
CPI-SAP-36	[1.42] 36
CPI-SAP-42	[1.65] 42
CPI-SAP-47	[1.85] 47
CPI-SAP-54	[2.13] 54

CLICK OR SCAN

QR codes for full catalog pages on products

ROUND TOOLING SYSTEMS

Round Tooling Accessories



For Proximity Switch Bumpers

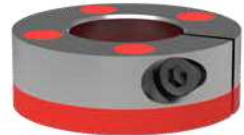
PSM Spring-Loaded Bumper



PB Friction Style Bumper



PB Locking Collar Style Bumper



Model Number	I.D. (Ø)
CPI-PSM-18-75	[18] 0.71"
CPI-PSM-30-75	[30] 1.18"

Model Number	I.D. (Ø)	O.D. (Ø)
CPI-PB-18-I	[18] 0.71	[38.1] 1.50
CPI-PB-30-I	[30] 1.18	[50.8] 2.00

Model Number	I.D. (Ø)	O.D. (Ø)
CPI-PB-30M	[57.2] 2.25	[30] 1.18
CPI-PB-36M	[63.5] 2.50	[36] 1.42
CPI-PB-42M	[69.9] 2.75	[42] 1.65
CPI-PB-47M	[76.2] 3.00	[47] 1.85
CPI-PB-54M	[85.9] 3.38	[54] 2.13

Blue Slice Nest Tooling



For Blue Slice Nest Tooling



Model Number	Material
CPI-SGM-TH-12	Steel

Nest Pad Guide

For Nest Pad Guides



Base Model NPG
Steel Nest Pad Guides

Length

04	4.00"
06	6.00"
08	8.00"
10	10.00"
12	12.00"
14	14.00"



Nest Pad Guide - Single



Base Model NPG
Steel Nest Pad Guides Single

Length

05	5.00"
06	6.00"
07	7.00"
08	8.00"

Height

04	4.00"
06	6.00"
08	8.00"

Nest Pad Guide - Wide



Base Model NPG
Steel Nest Pad Guides Wide

Length

3.5	3.50"
4.5	4.50"
5.5	5.50"
6.5	6.50"

Height

04	4.00"
06	6.00"
08	8.00"