

8700 SERIES

Pneumatic Swing Clamps | Product Overview

Features:

- Alternative solution to swing clamps when space is limited
- The clamping lever may be positioned left, forward, or right (relative to ports) within the same clamp body
- Threaded body with upper flange mount
- Non-toggle locking linkage
- Clamping arm and spindle included

Applications:

- Assembly & welding fixtures
- Light machining

Also Available:

See page MC-PSC-39 for jam nuts

8725



8732
8732G



8740
8740G



8750
8750G



Technical Information

| Model | Vertical Clamping Stroke* [in.] mm | Clamping Force† [lb.] N | Bore Size [in.] mm | Air Consumption‡ [in. ³] cm ³ | Weight [lb.] kg | Seal Kit |
|-------|---------------------------------------|----------------------------|-----------------------|---|--------------------|----------|
| 8725 | [0.10] 2,5 | [43] 195 | [0.98] 25 | [0.004] 0,11 | [1.3] 0,6 | 872500 |
| 8732 | [0.12] 3,2 | [64] 285 | [1.26] 32 | [0.008] 0,23 | [2.2] 1 | 873200 |
| 8740 | | [106] 470 | [1.57] 40 | [0.014] 0,41 | [2.6] 1,2 | 874000 |
| 8740G | | | | | | |
| 8750 | [0.15] 3,8 | [167] 745 | [1.97] 50 | [0.023] 0,64 | [4,4] 2 | 875000 |
| 8750G | | | | | | |

* Equal to approx. 6° above horizontal with standard clamping arm. † at 5bar [72psi].

‡ per double stroke at 5bar [72psi].

Operating Pressure Range:

3bar [45psig] to 7bar [100psig]

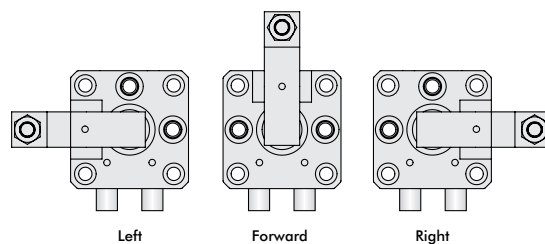
Max. Operating Temperature:

-10°C to 80°C [14°F to 175°F]

Application Note:

If using clamping arms other than standard, the length must not exceed 1.5X the overall length of the standard arm.

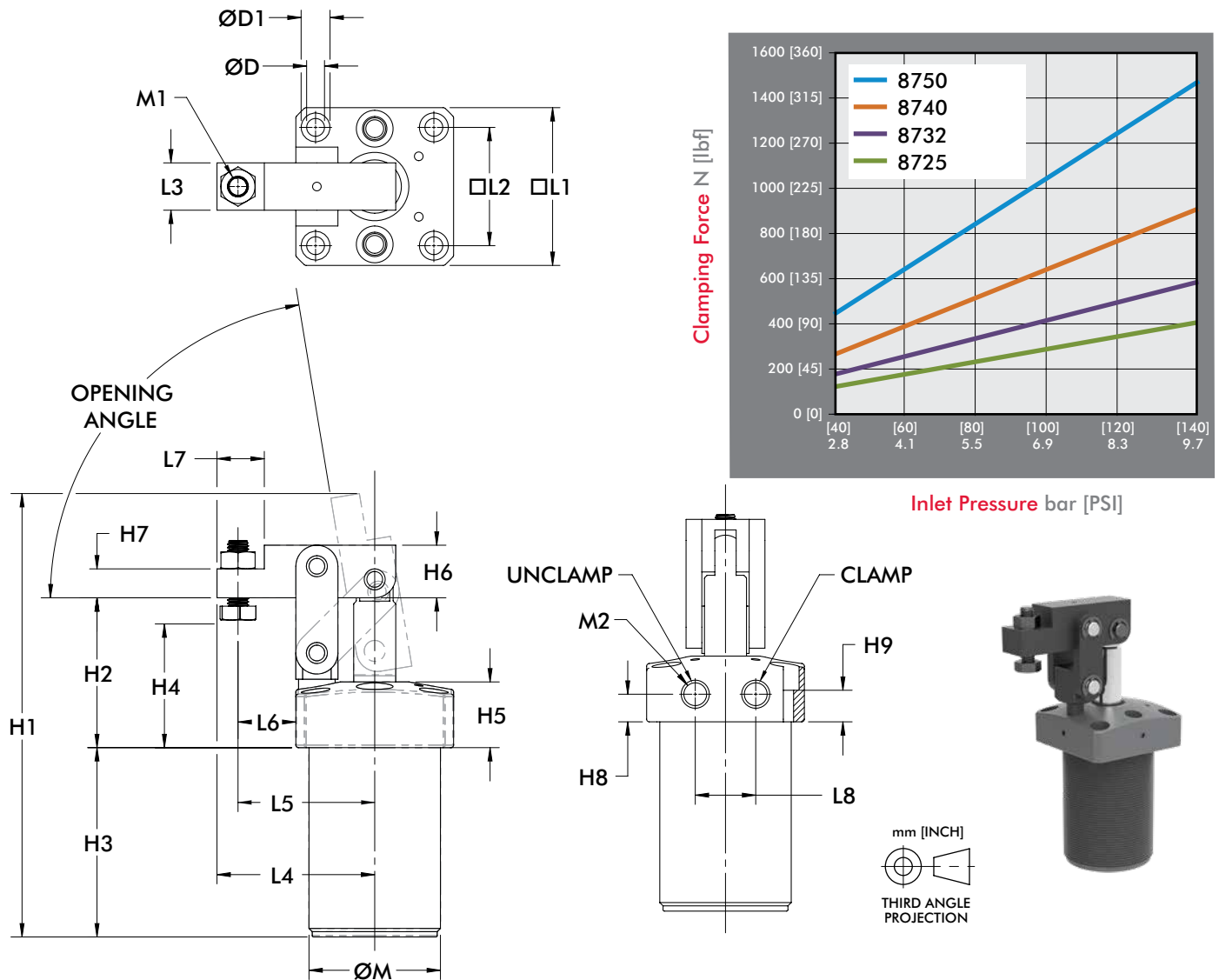
The inlet air flow rate should be adjusted to position the arm in no less than 1/2 second for standard arms and no less than 1 second in the case of an extended arm.



Levers can be positioned in one of three positions in relation to the air ports.

8700 SERIES

Pneumatic Swing Clamps | Dimensions, Clamping Forces



| Model | Opening Angle | ØD | ØD1 | H1 | H2 | H3 | H4 (min/max) | H5 | H6 | H7 | H8 | H9 |
|----------------|---------------|---------------|--------------|---------------|--------------|----------------|----------------------|--------------|--------------|--------------|----------------|--------------|
| 8725 | 80° | [0.22] 5,5 | [0.35] 9 | [5.67] 144 | [1.97] 50 | [2.42] 61,5 | [0.59-0.98] 15-25 | [0.98] 25 | [0.67] 17 | [0.39] 10 | [0.47] 12 | [0.59] 15 |
| 8732/ 8732G | 81° | [0.27] 6,8 | [0.43] 11 | [6.65] 169 | [2.25] 57 | [2.83] 72 | [0.63-1.18] 16-30 | | [0.79] 20 | [0.43] 11 | | [0.51] 13 |
| 8740/ 8740G | 82° | | | [6.93] 176 | [2.40] 61 | [2.85] 72.5 | [0.75-1.14] 19-29 | | [0.98] 25 | [0.55] 14 | [0.41] 10,5 | |
| 8750/ 8750G | 75° | [0.33] 8,5 | [0.55] 14 | [7.87] 200 | [2.60] 66 | [3.11] 79 | [0.86-1.30] 22-33 | | [1.18] 30 | [0.59] 15 | | [0.43] 11 |

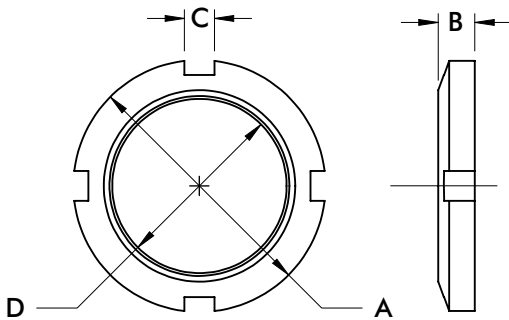
| Model | L1 | L2 | L3 | L4 | L5 | L6 | L7 | L8 | ØM | M1 | M2 |
|---------------|--------------|--------------|--------------|----------------|----------------|----------------|--------------|--------------|------------|------------|-------------------|
| 8725 | [1.97] 50 | [1.46] 37 | [0.63] 16 | [1.89] 48 | [1.61] 41 | [0.63] 16 | [0.55] 14 | [0.91] 23 | M40 x 1.50 | M6 x 1.0 | M5 x 0.8 |
| 8732 8732G | [2.36] 60 | [1.77] 45 | [0.71] 18 | [2.36] 60 | [2.05] 52 | [0.87] 22 | [0.71] 18 | | M50 x 1.50 | M8 x 1.25 | [1/8NPT] G-1/8 |
| 8740 8740G | [2.65] 65 | [1.97] 50 | [0.79] 20 | [2.60] 66 | [2.20] 56 | [0.93] 23,5 | [0.79] 20 | [1.02] 26 | M55 x 1.50 | | [1/8NPT] G-1/8 |
| 8750 8750G | [2.95] 75 | [2.28] 57 | [0.87] 22 | [3.05] 77,5 | [2.50] 63,5 | [1.02] 26 | [1.10] 28 | [1.26] 32 | M65 x 1.50 | M12 x 1.75 | [1/8NPT] G-1/8 |

8700 SERIES

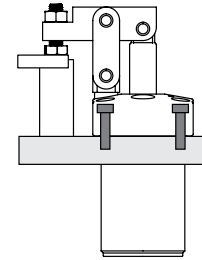
Pneumatic Swing Clamps | Jam Nuts

Features:

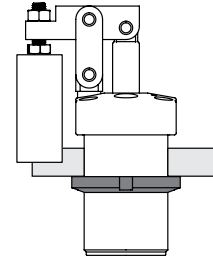
- For use with 8700 Series Pneumatic Lever Clamps
- Variable height adjustment
- For recessed mounting



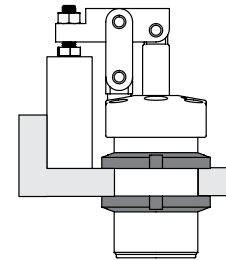
Mounting from above using 4 socket cap screws through the flange.



Mounting by screwing body into a tapped hole and locking with one jam nut.



Mounting by inserting body into a plain hole and locking with two jam nuts.



| Part Number | Used with Model | A | B | C | D | Weight [lbs] kg |
|-------------|-----------------|--------------|--------------|-------------|------------|-----------------|
| 872550 | 8725 | [2.28] 58 | [0.35] 9 | [0.28] 7 | M40 x 1.50 | [0.13] 0.06 |
| 873250 | 8732 | [2.76] 70 | [0.43] 11 | | M50 x 1.50 | [0.35] 0.16 |
| 874050 | 8740 | [2.95] 75 | | [0.31] 8 | M55 x 1.50 | [0.37] 0.17 |
| 875050 | 8750 | [3.35] 85 | [0.47] 12 | | M65 x 1.50 | [0.33] 0.15 |