

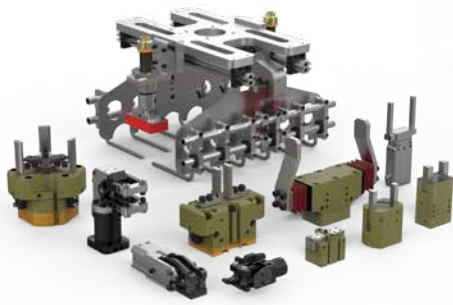
Visual Selection Guide

SPR10 | Small Payload Robot/Cobot Solutions (<10kg)



ABOUT DESTACO

Built on a Strong Foundation



Gripping Solutions



Linear Positioning Solutions



Rotary Positioning Solutions



Clamping Solutions



CRL Central Research Laboratories
a DESTACO company

CRL Remote Handling Solutions



Robotic Tooling Solutions

Destaco, a Dover company, is a global leader in the design and manufacture of high-performance automation, workholding and remote-handling solutions. The company serves customers in a variety of end-markets, including the automotive, life sciences, consumer packaged goods, aerospace, industrial and nuclear sectors.

Built on a legacy of more than 100 years, Destaco offers a comprehensive portfolio of products designed to engineer precise movement, placement and control solutions that drive productivity and uptime for manufacturers around the world. The Destaco family of products consists of industry-leading brands such as Destaco Manual Clamps, Power Clamps, and End Effectors; CAMCO™ and Ferguson™ Indexers; Robohand™ Grippers; and CRL™ Manipulators and Transfer Ports.

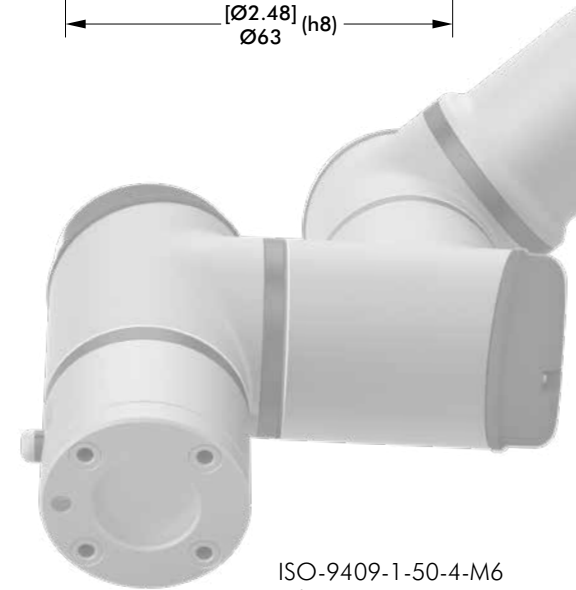
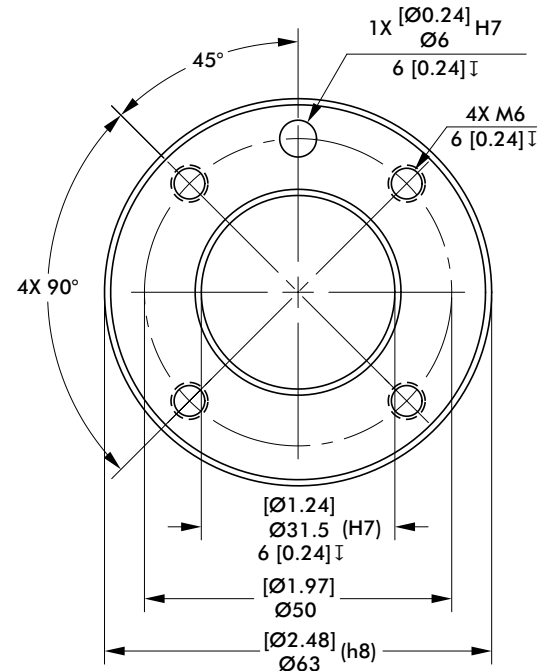
Destaco is based in Auburn Hills, Michigan, U.S.A. The company has more than 800 employees with 13 locations, in 9 countries, across the Americas, Europe and Asia.

Destaco is part of Dover Corporation, a diversified global manufacturer with annual revenues of \$7 billion. The company delivers innovative equipment and components, specialty systems and support services through four major operating segments: Energy, Engineered Systems, Fluids, and Refrigeration & Food Equipment. Headquartered in Downers Grove, IL, (NYSE: DOV)

More information is available at destaco.com and dovercorporation.com

ISO-9409-1-50-4-M6 Robot Mounting Pattern

Robot Manufacturer	Model
GENERIC	Any model with ISO-9409-1-50-4-M6 Pattern
ABB	CRB 15000
AUBO	I3, I5, I7, I10
DOBOT	CR - 5
DOOSAN ROBOTICS	M0609, M1509, M1013, M0617
ESI	C-7, C-15
F&P PERSONAL ROBOTICS	P-ROB 2R-24V, 48V
FRANKA EMIKA	PANDA
HAN'S ROBOTS	ELFIN 3, 5, 10
HANWHA PRECISION MACHINERY	HCR-3, 5, 12
JAKA/KUNLIN	ZU 7, 12
KAWADA INDUSTRIES	NEXTAGE
KUKA	LBR iiwa 7 R800, LBR iiwa 14 R820
MODBOT	Robot, SCARA
Omron TM	TM 5-700, TM 5-900, TM 12, TM 14
RAINBOW ROBOTICS	RB5
REIS	RV10-6, RV20-6
ROZUM	PULSE 75, 90
SIASUN	GCR5, GCR14, GCR20, SCR3, SCR5
STAUBLI	TX2 90, TX2 TOUCH 90, TX2 TOUCH 90L, TX2 TOUCH 90XL
TECHMAN	TM5M-700, TM5M-900, TM12M, TM14M
UNIVERSAL ROBOTS	UR3, UR5, UR10, UR16



ISO-9409-1-50-4-M6
Robot Mounting Pattern

Shown with
Gripper Adapter Kit
and DPDL-008M
Parallel Gripper



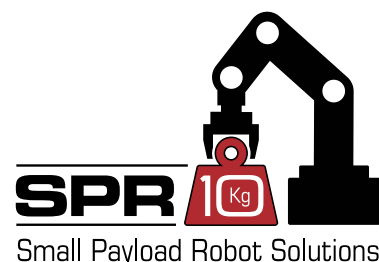
SPR 10 SOLUTIONS

Small Robot and Cobot Solutions

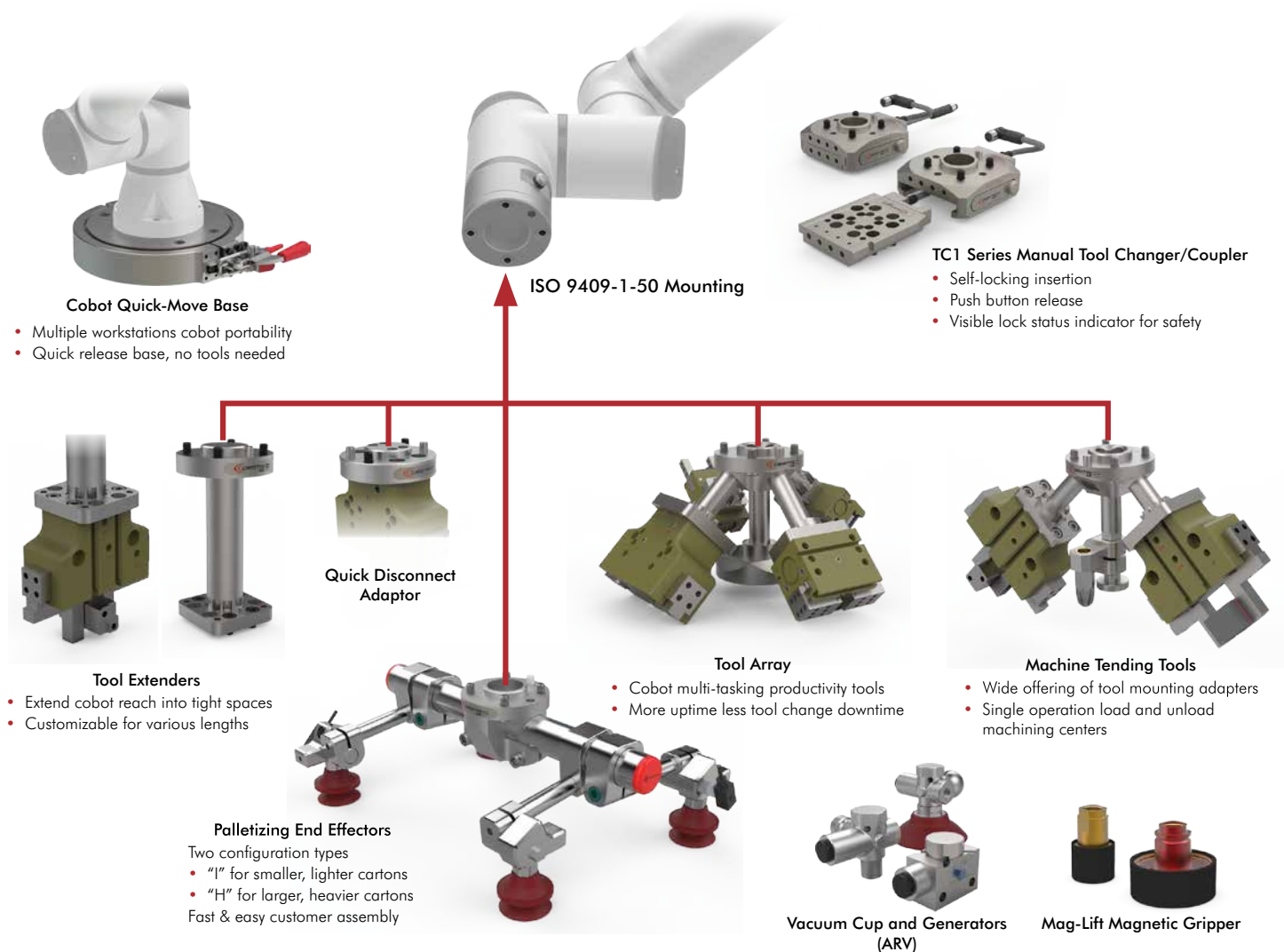
Small Payload Robot Tooling (<10kg)

for Small to Medium-sized Part Handling Solutions

DESTACO has designed its cobot tooling solutions for simplicity and ease of use with off-the-shelf availability via kits that feature all of the end-user selected accessories, along with the hardware and tools needed for installation, reducing the need to consult an application engineer. All of the tooling solutions are compatible with cobots that have an ISO 9409-1-50-4-M6 end-of-arm mounting pattern. Blank robot and tool plates are offered for those who wish to use their own mounting patterns.



DESTACO Cobot Solutions Overview



SPR 10 SOLUTIONS

Small Robot and Cobot Solutions

Small Payload Robot Tooling (<10kg) | Product Overview



TC-1
Manual Tool Changer/Coupler



Quick-Move
Robot Base Solutions



DirectConnect
Robot Gripper Adapter



Multi-Mount
Tool Extensions



Multi-Mount
Machine Tending Solutions



Multi-Mount
Tool Array Solutions



Micro-Tool Palletizing Solutions



Tool Tree Storage
Solutions



Vacuum and
Magnetic Grippers

Magnetic
Grippers



Vacuum
Grippers



SPR 10 SOLUTIONS

TC1 Series | Manual Tool Changer/Coupler

CLICK OR SCAN
To view full
catalog pages
on this product

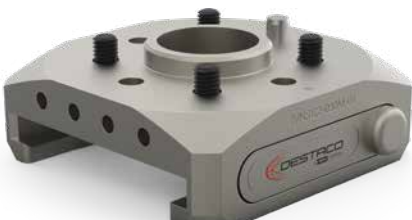


TC1-M Robot Plates



Blank Robot Plate

Model	Weight
TC1-050M-00	0.13 [0.29]



ISO 9409 Mounting

Model	Weight
TC1-050M-01	0.14 [0.31]



TC1-T Tool Plates



Blank Tool Plate

Model	Weight
TC1-050T-00	2.51 [5.53]



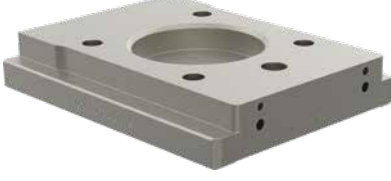
DirectConnect Robohand Mounting

Model	Weight
TC1-050T-01	2.26 [4.98]



ISO 9409 Mounting

Model	Weight
TC1-050T-02	2.26 [4.98]





CLICK OR SCAN

To view full
catalog pages
on this product

SPR 10 SOLUTIONS

TC1 Series | Manual Tool Changer/Coupler



Tool Changer shown with
TC1-E01M-C01 and TC1-E01T-C01
modules installed.



Tool Changer shown with
TC1-E01M-C01 and TC1-E01T-P01
modules installed.



TC1-E Electric Modules



Robot Plate 8-Pin M8 Socket
Electrical Pass-thru Module

Model	Weight
TC1-E01T-P01	0.13 [0.29]



Tool Plate 8-Pin M8 Plug
Electrical Pass-thru Module

Model	Weight
TC1-E01T-C01	0.14 [0.31]



Tool Plate Magneto Resistive
4mm Sensing Module

Part Number	Weight	Description
TC1-E01T-P01	0.09 [0.20]	PNP
TC1-E02T-N01		NPN

TC1-H Tool Holder



For Tool Plate

Model	Weight
TC1-050H-01	0.13 [0.29]



Tool Plate shown
placed in Tool Holder.



SPR 10 SOLUTIONS

Quick-Move Robot Base Changer



CLICK OR SCAN

To view full
catalog pages
on this product



CB Robot Adapter Kit for Tool Extension Solutions



ISO 9409 Mounting

Model	Weight
CB-200-R01	2.51 [5.53]

CB Robot Plate Blank



Model	Weight
CB-200-R00	2.26 [4.98]

CB-C Clamp Collar



Model	Weight
CB-200-C01	2 [4.40]



CB-B Workstation Base Plate



Model	Weight
CB-200-B01	2.28 [5.00]

Robot Plate Compatibility Chart

Robot Manufacturer	Model	Robot Plate
TECHMAN	TM5M-700, TM5M-900, TM12M, TM14M	CB-200-R01
UNIVERSAL ROBOTS	UR3, UR5, UR10, UR16	
HANWA PRECISION MACHINERY	HCR-3, HCR-5	
OMRON TM	TM5-700, TM5-900, TM12, TM14	
DOBOT	CR-5	CB-200-R00
Other Robots	Various	



CLICK OR SCAN

To view full
catalog pages
on this product



SPR 10 SOLUTIONS

DirectConnect Gripper Adaptor Kit

AP Robot Adapter Kit
for Robohand Grippers



Model	Weight
AP-050-01	0.13 [0.28]

AP Robohand Gripper Mounting Compatibility



Robohand Products	Compatible Series	Description
DPG	All Size	Pneumatic 2-Jaw Parallel Gripper
DPDL	047, 056, 088	
DPDS	047, 056, 088	
DPP	10M, 14M	
DPW	250M	
G110, G120	08, 11	Electric 2-Jaw Parallel Gripper
DPE	200-25	

8-Pin M8 NPN Sensor with Plug Connector



Part Number	Weight	Description
OHSN-023	0.011 [0.026]	NPN Magnetostrictive

8-Pin M8 PNP Sensor with Socket Connector



Part Number	Weight	Description
OHSN-022	0.011 [0.026]	PNP Magnetostrictive

SPR 10 SOLUTIONS

Multi-Mount Solutions

Robot Adaptors and Extension Kits



CLICK OR SCAN
QR codes for full catalog
pages on products



TE Tool Extensions



MM Machine Tending



MM Tool Array

Example assemblies shown

TE Robot Adapter Kit
for Tool Extension Solutions



ISO 9409 Mounting

Model	Weight
TE-050-01	0.13 [0.29]

MM Robot Adapter Kit
for Machine Tending and Tool Array Solutions



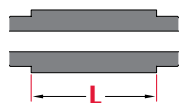
ISO 9409 Mounting

Model	Weight
MM-050-01	0.14 [0.31]

TE Extension Kit



TE-25040
Extension Kit
Shown



MM Extension Kit



MM1530
Extension Kit
Shown

for Tool Extension Solutions

Model	(L)	Weight
TE-25040	40mm	0.07 [0.15]
TE-25060	60mm	0.10 [0.22]
TE-25080	80mm	0.13 [0.29]
TE-25100	100mm	0.16 [0.35]

for Machine Tending/Tooling Array
Solutions

Model	(L)	Weight
MM-1520	20mm	0.25 [0.05]
MM-1530	30mm	0.31 [0.06]
MM-1540	40mm	0.37 [0.08]

MM Air Blow-Off Kit
for Machine Tending



Accepts G $\frac{1}{8}$ or $\frac{1}{8}$ NPT Male Fitting

Model	Weight
MM-T-05	0.051 [0.11]



Tool Extensions



Machine Tending

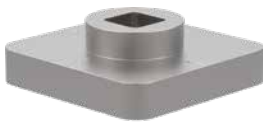


Tool Array

Example assemblies shown

MM-T Tool Plate

for Tool Extenders, Machine Tending and Tool Array Solutions



Blank for Customization

Model	Weight
MM-T-01	0.07 [0.15]



ISO 9409 Mounting

Model	Weight
MM-T-02	0.11 [0.24]

MM-T DirectConnect Tool Mount Kits

for Tool Extenders, Machine Tending and Tool Array Solutions



3mm and 5mm Square Mounting

Model	Weight
MM-T-03	0.06 [0.14]



3mm Square Mounting

Model	Weight
MM-T-04	0.021 [0.046]



3mm and 5mm Rectangular Mounting

Model	Weight
MM-T-05	0.051 [0.11]



3mm Rectangular Mounting

Model	Weight
MM-T-06	0.02 [0.04]



How To Order:

(Example shown is based on I-Structure configured end effector, considering the following box specifications. The H-Structure would be ordered in the same way. Be sure to observe min/max box sizes when configuring end effector.

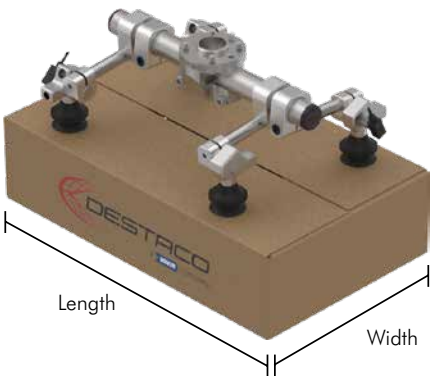
Length of Box (mm) = 600 Width of Box (mm) = 450 Weight of Box (kg) = 8

	Model Number #	Description	Qty	Page
1	CA-050-01	Robot Adapter Kit	1	5
2	CPI-PAT-IOT-12	Length Tube	1	6
3	VAA-300-1050-M18	Vacuum Arms	4	7
4	VC-B30N-18F	Vacuum Cups	4	9
5	360-VN-3	NPN Sensors	2	10

"I" Structure

for Small to Medium Boxes <10kg

See Page 14 for individual components



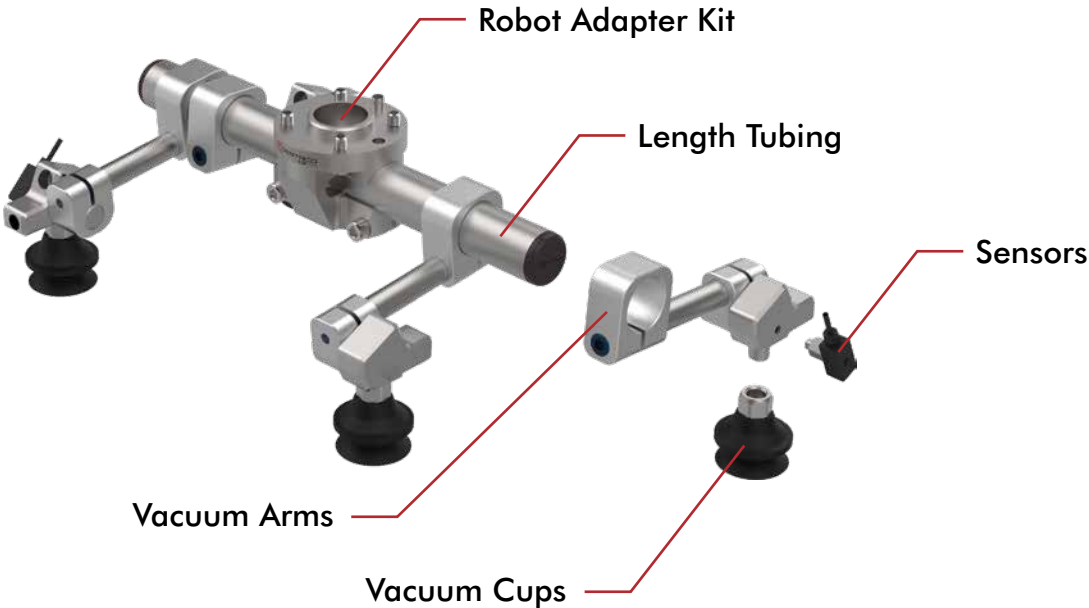
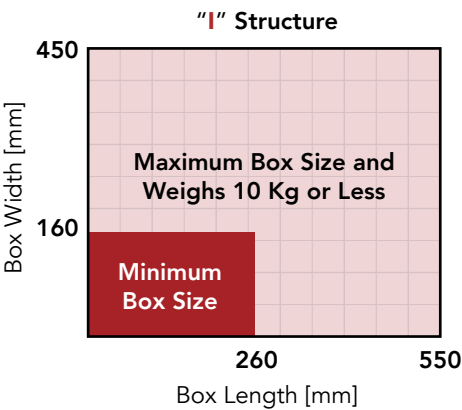
"I" Structure Palletizing

 Box Length

 260mm to 550mm

 Box Width

 160mm to 450mm





CLICK OR SCAN

To view full
catalog pages
on this product



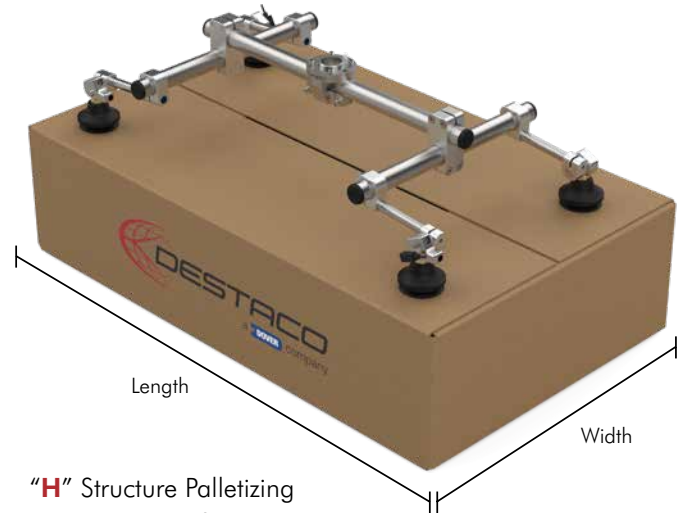
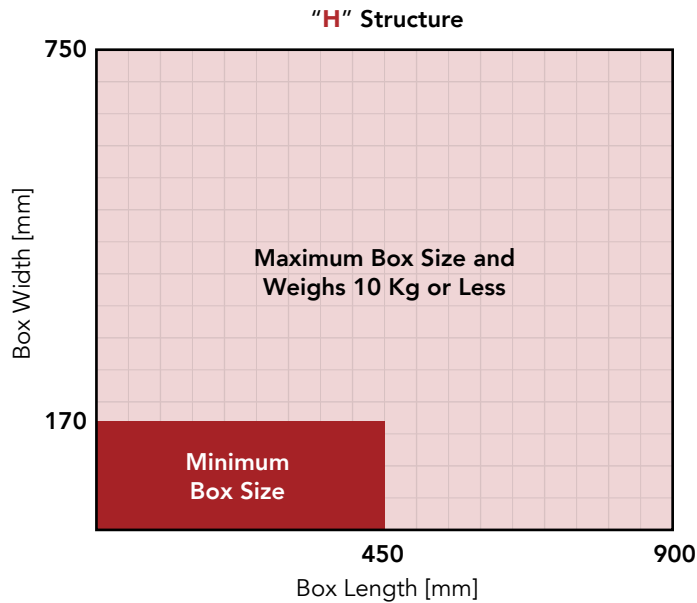
SPR 10 SOLUTIONS

MicroTool Palletizing End Effectors

"H" Structure

for Medium to Large Boxes <10kg

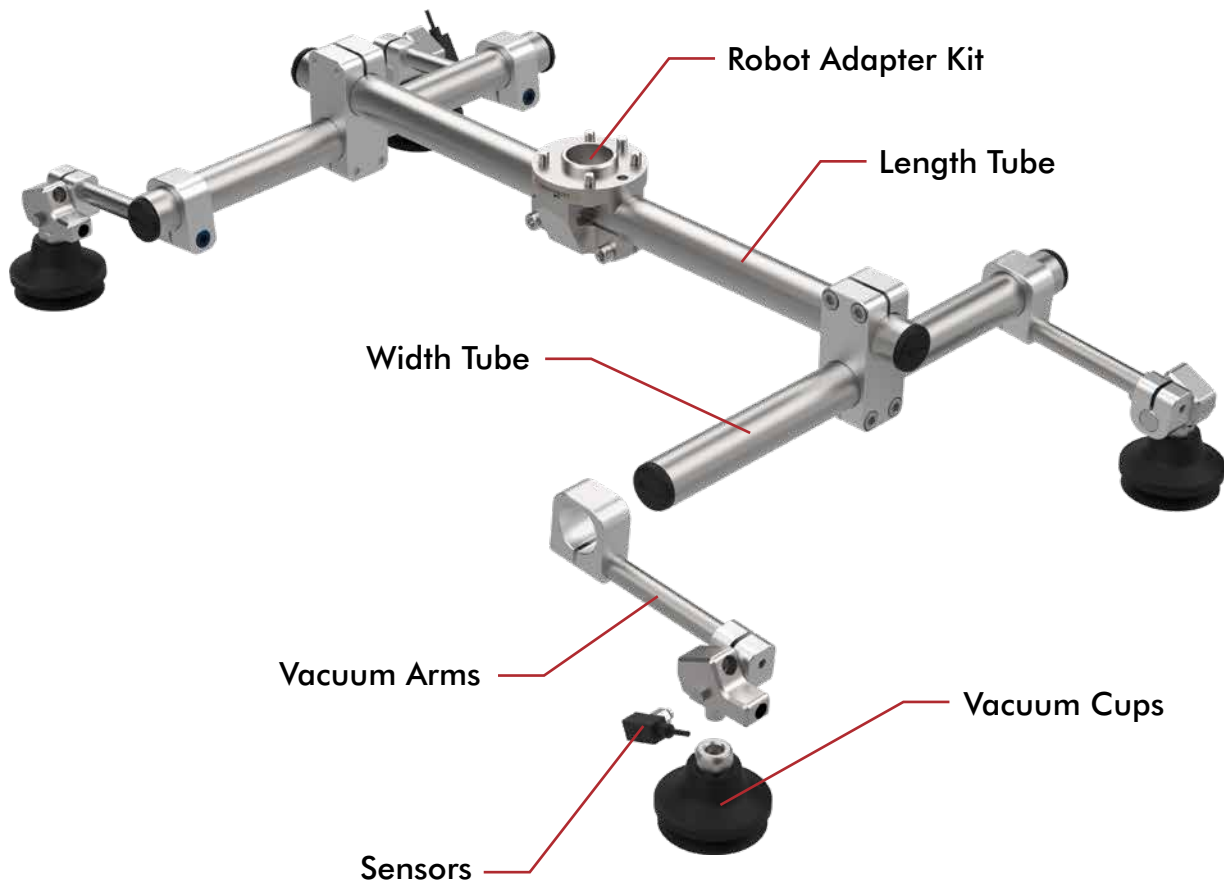
See Page 14 for individual components



"H" Structure Palletizing

Box Length
450mm to 900mm

Box Width
170mm to 750mm



SPR 10 SOLUTIONS

MicroTool Palletizing End Effectors



CLICK OR SCAN

To view full
catalog pages
on this product



CA Robot Adapter Kit



for Ø1.00" Tubing

Model	Weight
CA-050-01	0.21 [0.46]

CLM Clamp Assembly Kit



Ø1.00" to Ø1.00

Model	Weight
CPI-CLM-10-10-EC	0.13 [0.29]

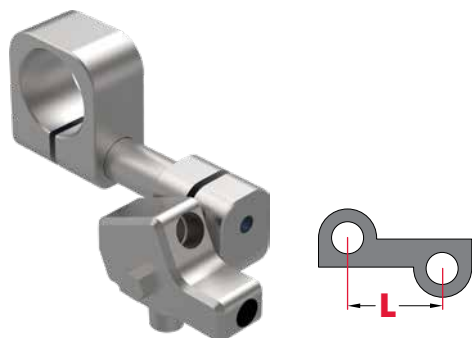
PAT Thin Wall Tubing



Ø1.00" / 0.85" Wall Thickness

Model	Structure	Weight
CPI-PAT-10T-06	H	0.06 [0.13]
CPI-PAT-10T-08	I, H	0.09 [0.20]
CPI-PAT-10T-10	I, H	0.11 [0.24]
CPI-PAT-10T-12	I, H	0.13 [0.29]
CPI-PAT-10T-14	I, H	0.15 [0.33]
CPI-PAT-10T-16	I, H	0.17 [0.38]
CPI-PAT-10T-18	H	0.19 [0.42]
CPI-PAT-10T-20	H	0.22 [0.48]
CPI-PAT-10T-22	H	0.24 [0.53]
CPI-PAT-10T-24	H	0.26 [0.57]

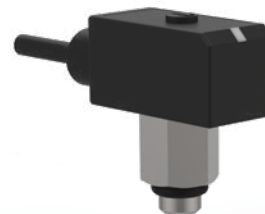
VAA Vacuum Assembly for Ø1.00" Tube



Ø1.00" to Ø 0.50" Applecore

Model	(L)	Structure	Weight:
VAA-200-1050-M18	50.7 [2.00]	I	0.09 [0.20]
VAA-300-1050-M18	76.1 [3.00]	I	0.10 [0.22]
VAA-400-1050-M18	101.6 [4.00]	I, H	0.11 [0.24]
VAA-500-1050-M18	127.0 [5.00]	I	0.12 [0.26]
VAA-600-1050-M18	152.4 [6.00]	I	0.13 [0.28]

Vacuum Sensor



Part Number	Weight	Description
360-VN-3	0.09 [0.20]	NPN
360-VP-3		PNP

VC-B Micro Series Round Bellow Vacuum Cups (Female Mount)



Ø20mm

Model	Structure	Weight*
VC-B20N-18F	I, H	6.2 [0.20]



Ø30mm

Model	Structure	Weight*
VC-B30N-18F	I, H	11.5 [0.37]



Ø50mm

Model	Structure	Weight*
VC-B50N-18F	I, H	30.5 [0.98]

(*) Weight shown in: g [oz]

VSA ARV® Vacuum Gripper Kit



Shown with
Vacuum Sensor
and
VC-B30N-18M

Model	Weight
CPI-VSA-ARVS-5-U18	0.13 [0.29]

VC-F Micro Series Round Flat Foot Vacuum Cups



Ø20mm

Model	Weight*
VC-F20N-18M	7.8 [0.27]



Ø30mm

Model	Weight*
VC-F30N-18M	6.2 [0.22]



Ø50mm

Model	Weight*
VC-F50N-18M	19.6 [0.69]

(*) Weight shown in: g [oz]

VC-B Micro Series Round Bellow Vacuum Cups



Ø20mm

Model	Weight*
VC-B20N-18M	5.07 [0.18]



Ø30mm

Model	Weight*
VC-B30N-18M	11.42 [0.40]



Ø50mm

Model	Weight*
VC-B50N-18M	24.76 [0.87]

(*) Weight shown in: g [oz]

VC-BM Micro Series Round MultiBellow Vacuum Cups



Ø20mm

Model	Weight*
VC-BM20N-18M	[0.19] 5.3



Ø30mm

Model	Weight*
VC-BM30N-18M	[0.36] 10.3



Ø50mm

Model	Weight*
VC-BM50N-18M	[1.15] 32.7

(*) Weight shown in: g [oz]

MG Magnetic Gripper Kit



Ø1.50"

Model	Weight
MG-050-01	0.31 [0.69]



Ø3.00"

Model	Weight
MG-050-02	0.57 [1.26]

SPR 10 SOLUTIONS

Tool Tree Storage Solutions



CLICK OR SCAN

To view full
catalog pages
on this product



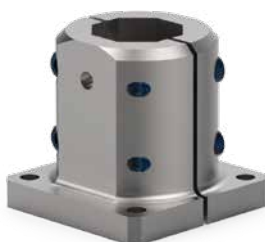
TC Tool Holder Mount Kit



for Ø30 mm Boom

Model	Weight
TC-050H-02	0.37 [0.81]

CLM End Mount



Ø1.00" to Ø1.00

Model	Weight
CPI-CLM-30B-20F	0.29 [0.64]

B-30 BodyBuilder™ Extrusion



30mm Octagonal Boom

Model	(L)	Weight:	Max # of Tool Holders
B-30-300-0	300 [11.8]	0.38 [0.84]	4
B-30-400-0	400 [15.7]	0.51 [1.12]	6
B-30-500-0	500 [19.7]	0.64 [1.40]	8

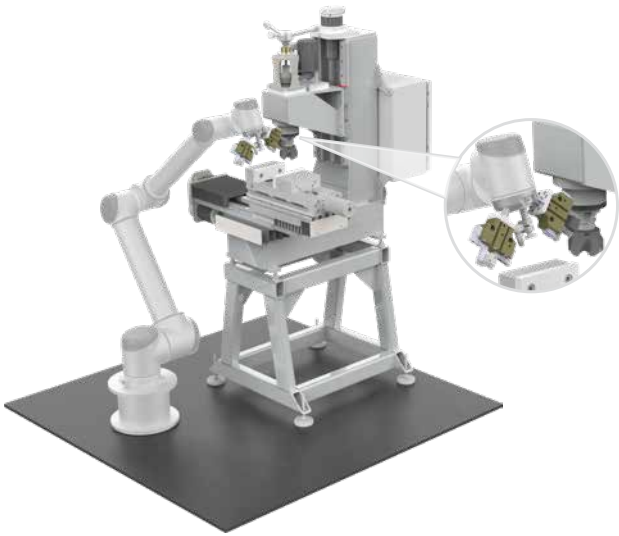


(*) Weight shown in: g [oz]

SPR-10 APPLICATION EXAMPLES

Small Robot and Cobot Solutions

Tool Extenders and Machine Tending



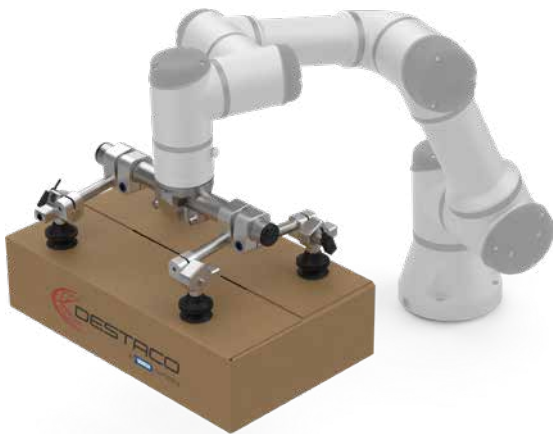
Tool Arrays



DirectConnect Robohand Gripper Adapter



Microtool Palletizing



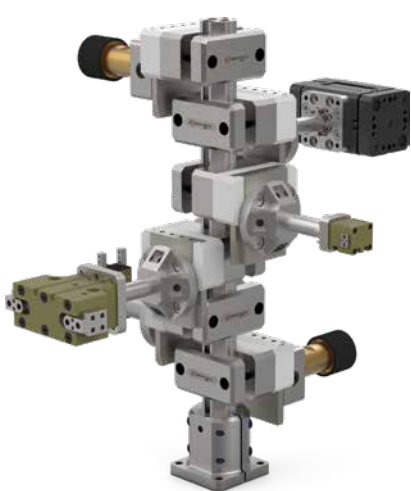
Mag-Lift Magnetic Gripper



ARV® Vacuum Gripper



Tool Tree Holder

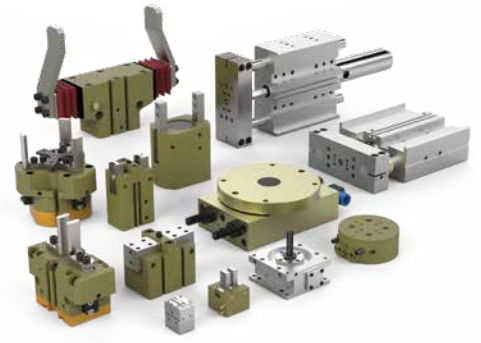


OUR PORTFOLIO OF PRODUCTS



End Effectors (EE)

- Tool Changers
- End-of-Arm Tooling
- Vacuum Products
- Palletizing Solutions



Grippers (GR)

- Electric Grippers
- Pneumatic and Sheet Metal Grippers
- Rotates
- Slides



Indexers (IN)

- Precision Conveyors
- Dial Indexers
- Shaft and Flange Indexers
- Part Handlers



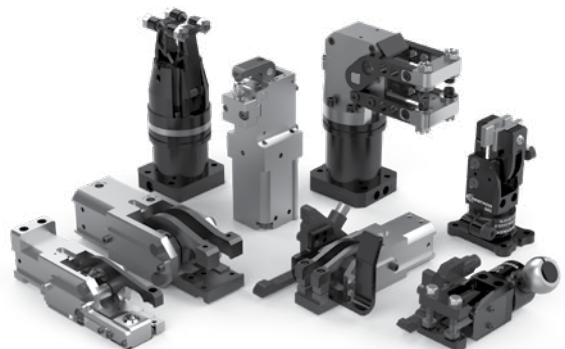
Power Clamps (PC)

- Power Clamps
- Pin Clamps and Packages
- Pivot Units
- Power Cylinders



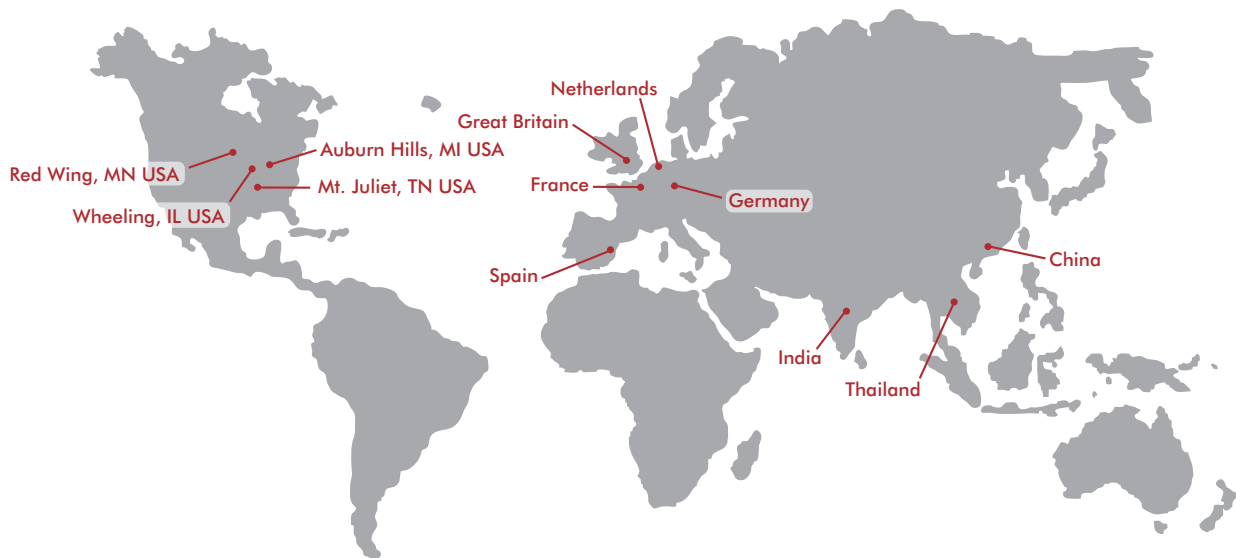
Manual Clamps (MC)

- Hold Down
- Squeeze Action
- Plunger, Hook and Latch
- Pneumatic Toggle and Swing



Sheet Metal Grippers (SM)

- Accelerate® Press Room
- Cam Type
- Toggle Lock



GLOBAL LOCATIONS

EUROPE

Germany
Tel: +49-6171-705-0
Customer Service: europe@destaco.com

France
Tel: +33-4-7354-5001
Customer Service: france@destaco.com

Great Britain
Tel: +44-1902-797980
Customer Service: uk@destaco.com

Spain
Tel: +34-936361680
Customer Service: spain@destaco.com

Benelux
Tel: +31-297285332
Customer Service: benelux@destaco.com

ASIA

Thailand
Tel: +66-2-326-0812
Customer Service: info@destaco.com

China
Tel: +86-21-6081-2888
Customer Service: china@destaco.com

India
Tel: +91-80-41123421-426
Customer Service: india@destaco.com

NORTH AMERICA

Corporate Headquarters
Auburn Hills, Michigan
Toll Free: 1.888.Destaco
Marketing: marketing@destaco.com

Global Technology Center
Auburn Hills, Michigan
Tel: 1.248.836.6700
Customer Service: customerservice@destaco.com

Mt. Juliet, Tennessee
Tel: 1.888.Destaco
Customer Service: customerservice@destaco.com

Wheeling, Illinois
Tel: 1.800.645.5207
Customer Service: camco@destaco.com

Red Wing, Minnesota (Central Research Laboratories)
Tel: 651.385.2142
Customer Service: sales@centres.com

CLICK OR SCAN
for the latest
PDF version of
this document.

