

# **GALLOCK - WEDGE LOCK WASHERS**



# GALLOCK - WEDGE LOCK WASHERS

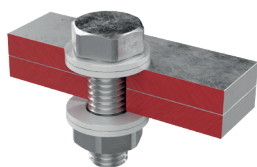
Gallock - Wedge Lock Washers ensure the integrity of fastener thread systems by using tension rather than friction, which is the basis of most traditional fastening methods. This provides security to the threaded systems.



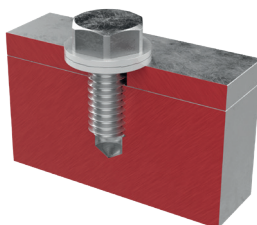
Gallock - Wedge Lock Washers consists of two identical flat washers which have a set of cams on one side and a radial knurling on the other. These two washers are supplied glued together, in order to avoid any orientation mistake during assembly.



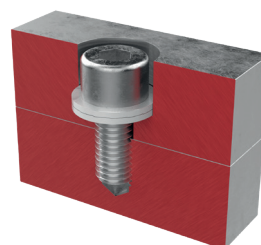
SCAN FOR  
MORE INFO



Through holes



Large/slotted holes



Counter bores

## APPLICATIONS

- Railways
- Wind Turbines
- Off Highway Vehicles
- Heavy Machinery
- Infrastructure

## ADVANTAGES

- Uses tension to create high force in a fastened joint
- Suitable for dynamic loads with High tensile bolts and nuts
- Very easy to install and remove
- Can be re-used with no reduction in function or quality

## STOCK RANGE

- Bolt sizes: M8-M36
- Zinc Flake Coating
- Special Coating on request
- Special Material on request
- *Other sizes also on request*