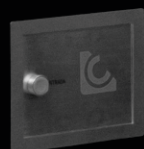




## LC-CABIN V2

WELD. CLEAN. MARK.



# Global presence

## Own manufacturing and original design

At LC we work to offer the best laser solutions in the world of welding, industrial cleaning and product marking and engraving.



### Analysis

Every day we work to give our clients maximum satisfaction. We aim to ensure that your laser equipment is the most suitable for you. We want it to be the best option in the laser world and that is why we want to advise you so that you make the perfect decision. We offer 100% personalized solutions to each client.



### Production

At LC we produce laser equipment in our facilities, to provide a fast, efficient and high-quality service. Thanks to our production system we can ensure every detail and finish of our machines.



### Quality

Our components are from top brands so that your laser equipment works at 100% from the first moment. We work with rigorous systems to improve controls and ensure the highest performance of the equipment.

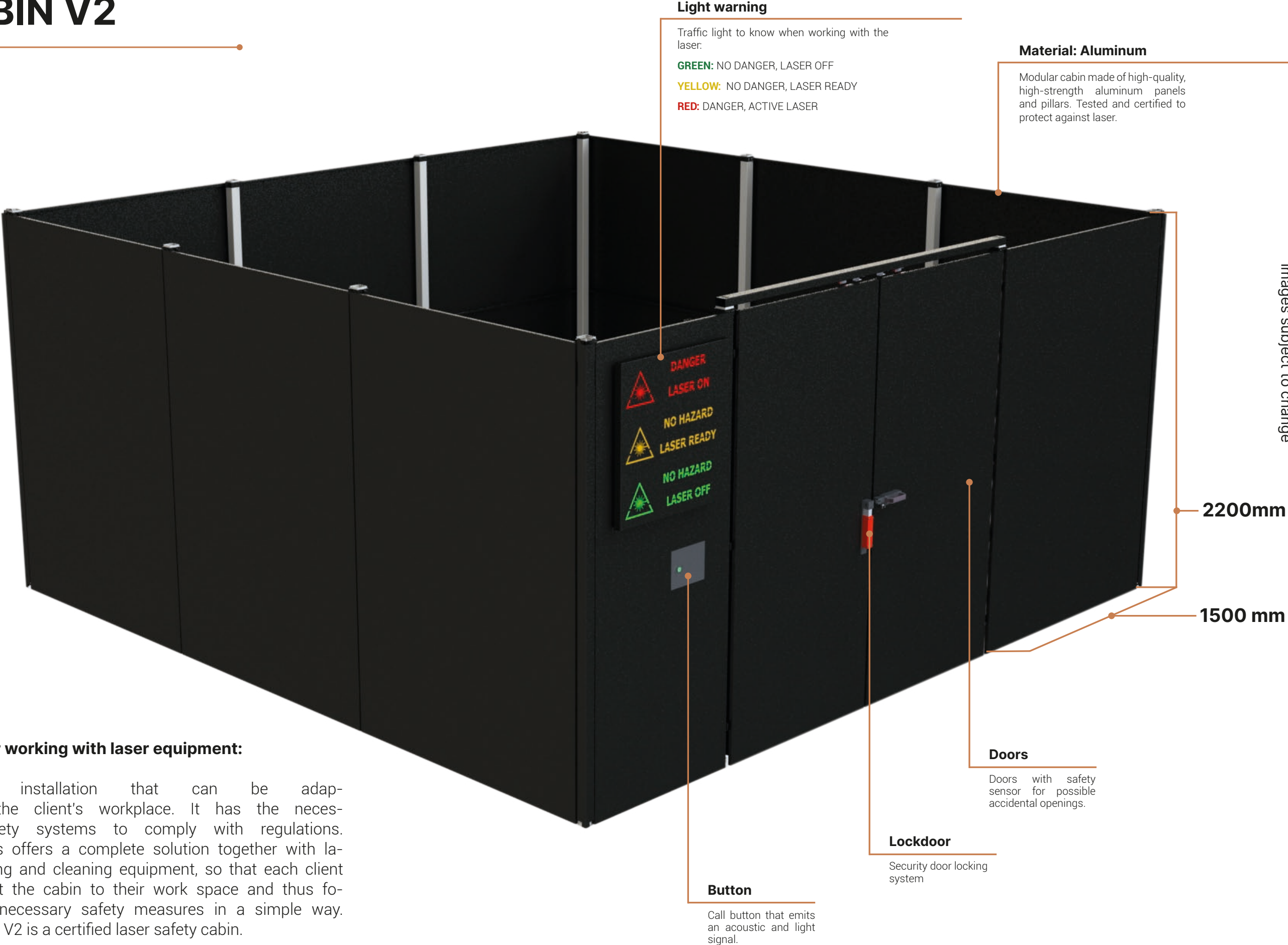


### After-sales service

We offer a comprehensive 2.0 after-sales service, with telephone and email support and, if required, in-person assistance. We have qualified technicians who provide online and in-person training, as well as offering a rigorous and fast technical service. We seek to offer the fastest and most effective solution possible.



Example of  
Laser Safety Cabin  
**LC-CABIN V2**



**Light warning**

Traffic light to know when working with the laser:

- GREEN:** NO DANGER, LASER OFF
- YELLOW:** NO DANGER, LASER READY
- RED:** DANGER, ACTIVE LASER

**Material: Aluminum**

Modular cabin made of high-quality, high-strength aluminum panels and pillars. Tested and certified to protect against laser.

Images subject to change

2200mm

1500 mm

**Cabin for working with laser equipment:**

Modular installation that can be adapted to the client's workplace. It has the necessary safety systems to comply with regulations. LC Lasers offers a complete solution together with laser welding and cleaning equipment, so that each client can adapt the cabin to their work space and thus follow the necessary safety measures in a simple way. LC-CABIN V2 is a certified laser safety cabin.

**Doors**

Doors with safety sensor for possible accidental openings.

**Lockdoor**

Security door locking system

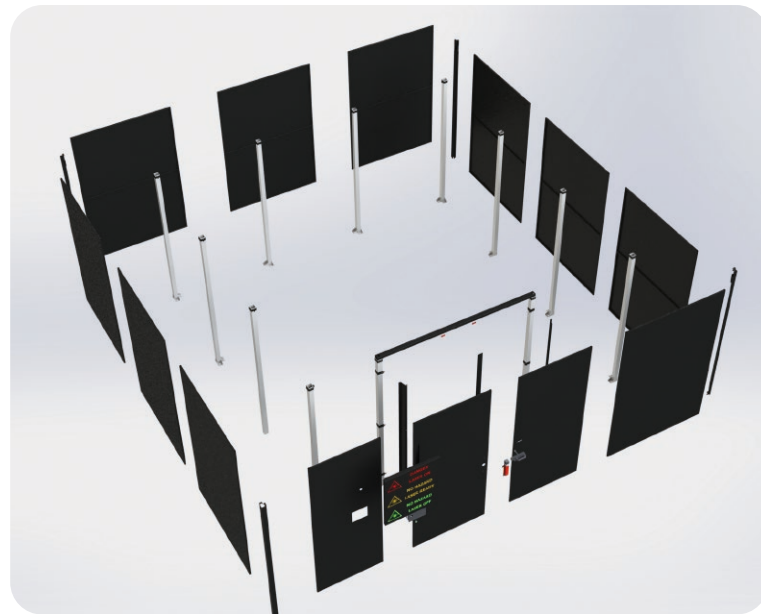
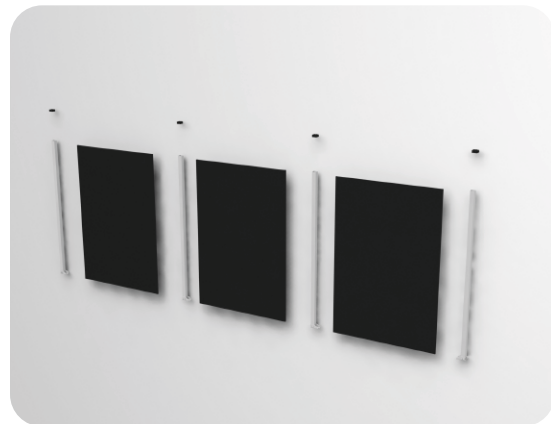
**Button**

Call button that emits an acoustic and light signal.

## Modular design

Adaptable modular design composed of panels.

- 1.5 m wide panels.
- Door + Electrical panel 3 m wide.
- Cabins from 3×1.5m to 9×9m.



## General characteristics

Total security

Adaptability

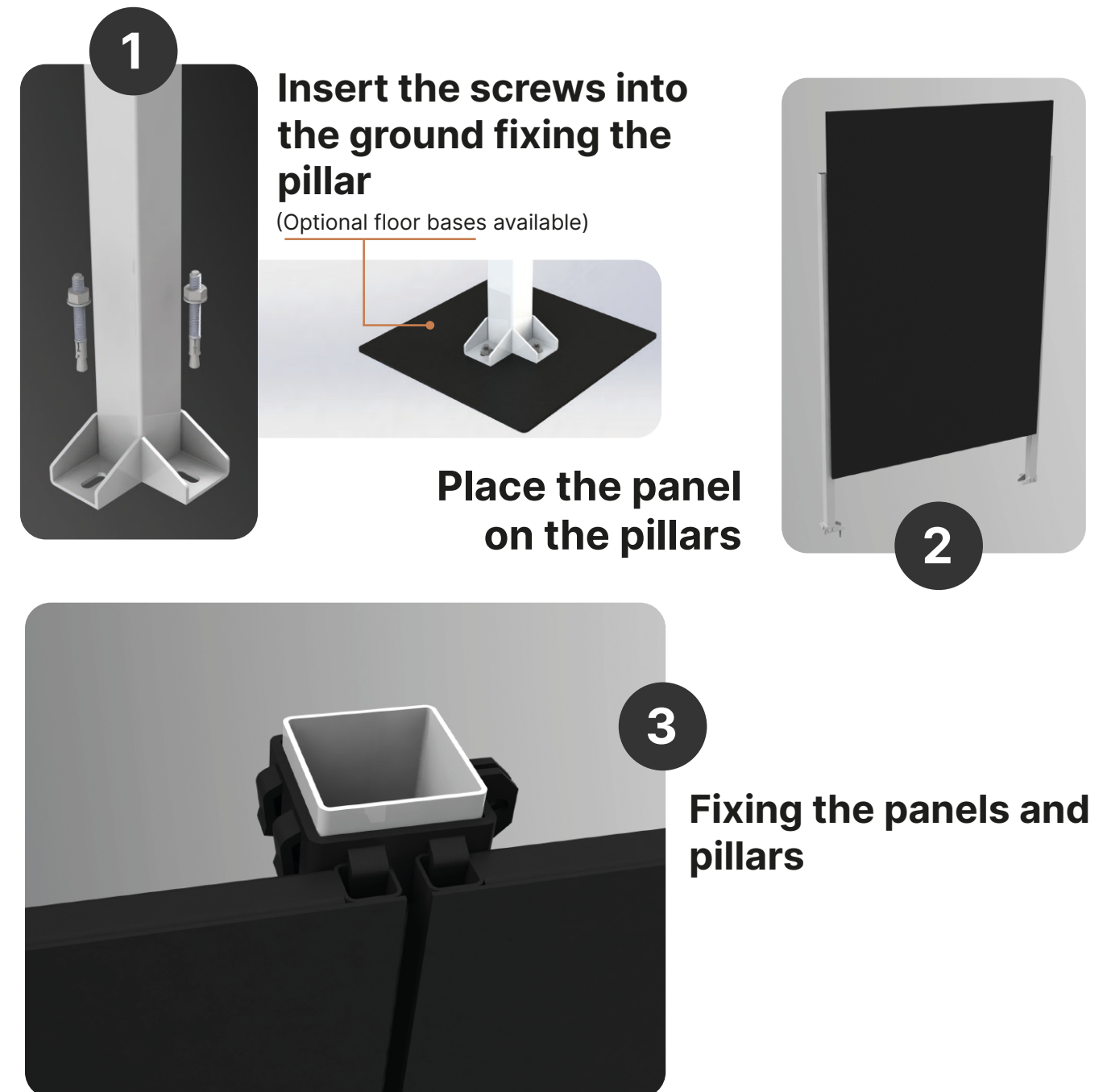
Ease of assembly

Economical solution



## Ease of assembly

3×3 cabin assembled in 30 minutes (2 people)  
(with ground bases)



WORKING WITH LASER HAS  
NEVER BEEN **EASY**



# THE ONLY COMPLETE CERTIFIED SYSTEM

(LC-WELD NEO + LC-CABIN V2)

## Certification

Model in compliance with the harmonized European standard for laser product safety:

UNE EN 60825-1:2015

UNE EN 60825-4:2007

LC-CABIN V2 is a **certified product**.

**In accordance with the requirements  
of the following international entities:**

- **SUVA** (Swiss National Accident Insurance Fund)
- **Alphanov** (Centre Technologique Optique et Lasers, France)

## Seguridad

Decision on the safety of the enclosure according to European standards EN60825 by an external certification company.

The box must be equipped with various safety devices:

- Mandatory interior and exterior signage
- Indicator light
- Automatic push button
- Reset system in case of door opening
- Safety relays
- 2nc door sensors



# Options

In order to adapt the solution to each case and to the options and needs of each client, we offer the possibility of choosing the elements that are required.

## 1 Door

Double door including pillars and crossbar.

Each door measures 1x2.2 m. In total the double door is 2 m wide.



## 2 Electrical panel

Panel for electrical components. Does not include light warning and control.

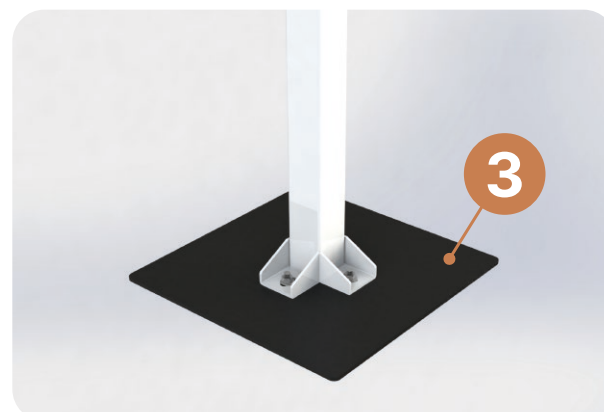
It has holes for installing the traffic light and control, making it easy to assemble without the need for additional modifications.

The electrical panel measures 1x2.2 m.



## 3 Ground bases

Ground bases allow for quick and secure installation without the need to drill holes in the ground. Designed to hold the pillars firmly in place, these bases offer a practical and efficient solution, avoiding the use of permanent fixings.



## 4 Pillars

White aluminum pillars placed between panels.



## 5 Panels

Black aluminium panels measuring 1.5x2.2 m.

5.1 Panel without glass

5.2 Panel with glass

## 6 Safety kit

6.1 Traffic light

6.2 Control

A) With lockdoor B) Without lockdoor



## 7 Corner panel

Panel needed to cover corner pillars.



## 8 Wall panel

Panel needed to mount a cabin to the wall.

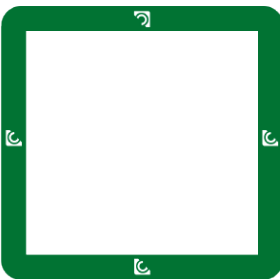




# Examples

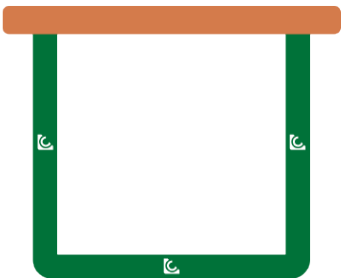
Depending on the work area where the cabin is located, as it is an adaptable and perfectly customizable solution through the modules, we can find different ways to implement LC-CABIN V2:

## Full cabin



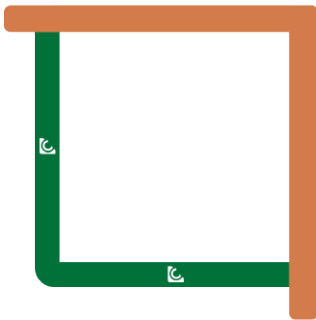
The **full cabin** offers independent enclosure from the surrounding walls, using panels that adjust to the required size of the work area. It is ideal for open spaces or areas without structural divisions, providing full protection on all sides and ensuring a safe environment for laser welding.

## U-shaped enclosure



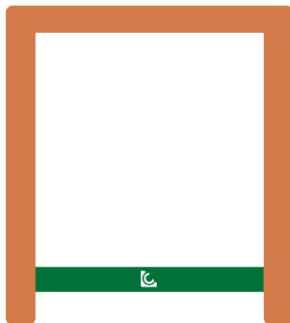
This **U-shaped enclosure** is designed to blend into areas where a back wall already exists. LC-CABIN panels form the sides and front of the cabin, allowing the size to be adapted to the available area. An efficient option for those looking to maximise the use of existing walls.

## L-shaped enclosure



The **L-shaped enclosure** is ideal for corners, taking advantage of two existing walls to reduce the number of panels needed. LC-CABIN panels complete the open area, with the flexibility to adapt the size according to the needs of the workspace.

## Enclosure in existing box

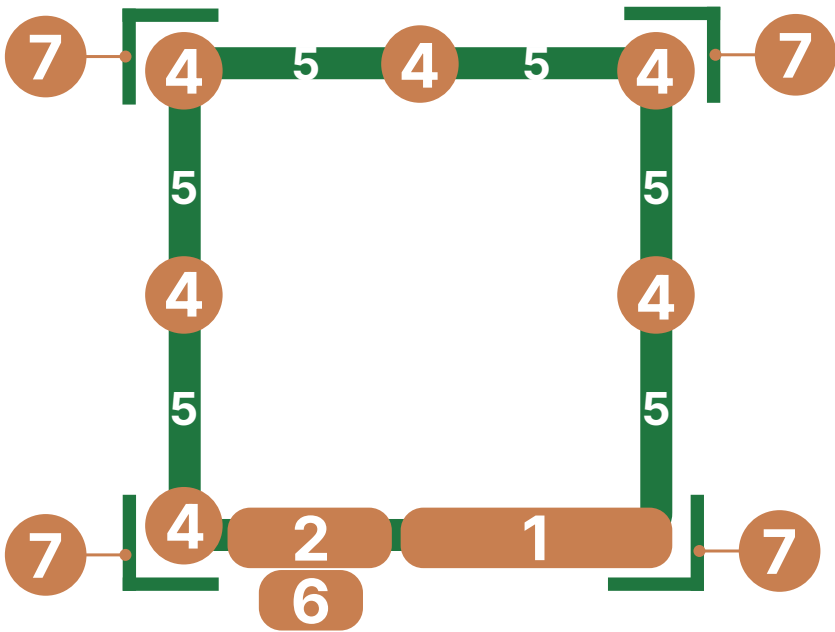


In spaces that already have three walls, only the **front enclosure** with LC-CABIN panels is required. This solution is perfect for making the most of the existing infrastructure, adapting the panels to the size required to ensure the safety and containment of the welding process.

# LC-CABIN V2 Ordering Guide

Below we show different examples of how to configure your LC-CABIN V2 cabin depending on the size and your space.

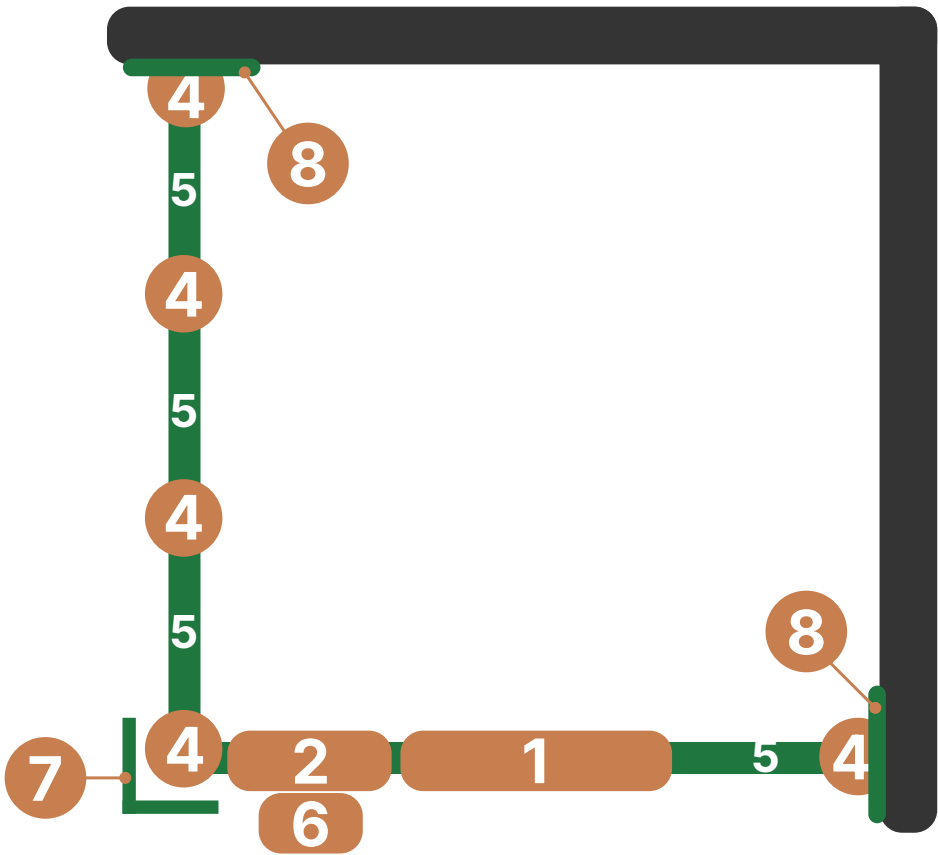
## 3x3 cabin



1	Door		1
2	Electrical panel		1
3	Ground bases		0
4	Pillars		6
5	Panels	5.1 Without glass	6
		5.2 With glass	0
6	Safety kit	6.1 Warning Light	1
		6.2 Control (A o B)	A
7	Corner panel		4
8	Wall panel		0

# LC-CABIN V2 Ordering Guide

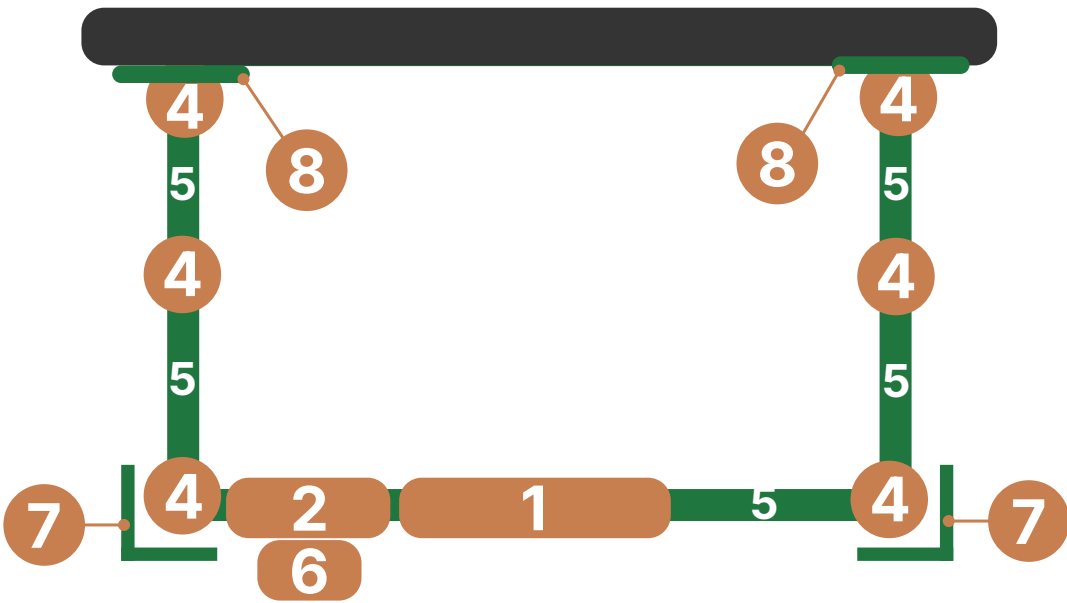
## 4.5×4.5 L-shaped cabin



1	Door		1
2	Electrical panel		1
3	Ground bases		0
4	Pillars		5
5	Panels	5.1 Without glass	4
		5.2 With glass	0
6	Safety kit	6.1 Warning Light	1
		6.2 Control (A o B)	A
7	Corner panel		1
8	Wall panel		2

# LC-CABIN V2 Ordering Guide

## 4.5×3 U-shaped cabin



1	Door		1
2	Electrical panel		1
3	Ground bases		0
4	Pillars		6
5	Panels	5.1 Without glass	5
		5.2 With glass	0
6	Safety kit	6.1 Warning Light	1
		6.2 Control (A o B)	A
7	Corner panel		2
8	Wall panel		2





C/ Pere Andorrà, 5, Nave 6  
08650 · Sallent  
Barcelona (Spain)

M. +34 623 337 600  
T. +34 936 281 426

[contacto@lclasers.com](mailto:contacto@lclasers.com)



[www.lclasers.com](http://www.lclasers.com)

02.09.01\_EN\_004